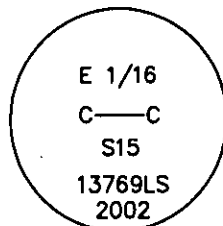


CERTIFIED CORNER RECORDATION

Corner CE 1/16 Sec. 15 T. 36 N. R. 26 W. P.M.M. LINCOLN County

- I. Record: No previous record.
- II. No evidence found.
- III. At the position determined by survey, set a 5/8 in. diam., 24 in. long rebar, 22 ins. in the ground, with a 3 1/4 in. diam. aluminum cap marked as shown:

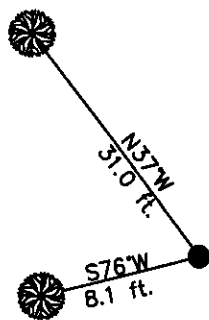


The new bearing trees:

- A fir, 18 ins. diam., S76°W, 8.1 ft., marked CE 1/16 S15 BT.
- A fir, 6 ins. diam., N37°W, 31.0 ft., marked X BT.

Set a 6 ft. galvanized steel guard post 3.0 ft. north and south, with Property Boundary and Land Survey Monument decals attached. Attached Bearing Tree and Land Survey Monument signs to the bearing trees. Painted red bands around the bearing trees.

Date of Fieldwork: 11/7/2002
 Survey crew: Steve Boyer, Tom Hommel
 Magnetic declination: 20° East assumed
 Equipment used: Hand compass and loggers tape
 U.S. Forest Service, Supervisors Office, 1101 Hwy. 2 West, Libby, MT 59923 (406) 293-6211



SKETCH OF CORNER

NOT TO SCALE

CERTIFICATION

I, Steven A. Boyer 37501 SAN, certify the information shown herein is true and correct.

Steven A. Boyer
 Signature of Ground Party

I, Roger O. Green 13769LS, certify that this Corner Record correctly represents work performed by me or under my direction in compliance with the "Corner Recordation Act" (70-2-108) MCA.

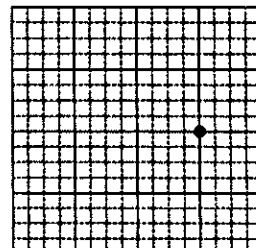
Roger O. Green
 Signature of Surveyor & Licensee

Date: 11/07/2002 Reg. No. 13769LS
 Employer: U. S. Forest Service

Office of Clerk and Recorder, County of Lincoln This "corner record" was filed for record on Jan 30, 2003 was noted on the cross-index plat and is assigned page No. 10590, in book No. Coral M. Cunningham by DB

County Official

Sec. 15



• corner this sheet

Cross Index No. L-16 T. 36N. R. 26W. P.M., MT