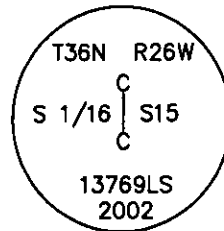


CERTIFIED CORNER RECORDATION

Corner CS 1/16 Sec. 15 T. 36 N. R. 26 W. P.M.M. LINCOLN County

- I. Record: 1997 Certificate of Survey #2523 by Dawn Marquardt: Subdivides the SE 1/4 section 15 and establishes the CS 1/16. A 5/8 in. diam. x 24 in. long rebar with a yellow plastic cap stamped 7328S was set at the position for the CS 1/16.
- 2000 Certificate of Survey #3061 by Dawn Marquardt: References the CS 1/16.
- 2001 Final Subdivision Plat Colgrove #1. #6374 by Dawn Marquardt: References the CS 1/16.
- 2002 Subdivision Plat Colgrove #2. #6422 by Dawn Marquardt: References the CS 1/16.
- II. Found a 5/8 in. diam. rebar, 6 ins. above ground, with a yellow plastic cap marked MARQUARDT 7328S.
- III. Accept the position of the found Marquardt rebar as the true position for the CS 1/16. Removed the yellow plastic cap and replaced it with a 3 1/4 in. diam. aluminum cap marked as shown:

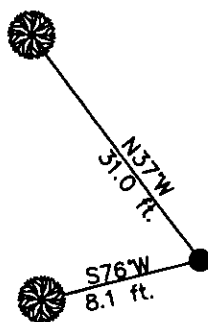


The new bearing trees:

- A fir, 7 ins. diam., N7°E, 7.5 ft., marked X BT.
A fir, 11 ins. diam., N69°W, 9.6 ft., marked CS 1/16 S15 BT.

Set a 6 ft. galvanized steel guard post 3.0 ft. east and west, with Property Boundary and Land Survey Monument decals attached. Attached Bearing Tree and Land Survey Monument signs to the bearing trees. Painted red bands around the bearing trees.

Date of Fieldwork: 11/7/2002
Survey crew: Steve Boyer, Tom Hommel
Magnetic declination: 20° East assumed
Equipment used: Hand compass and loggers tape
U.S. Forest Service, Supervisors Office, 1101 Hwy. 2 West, Libby, MT 59923 (406) 293-6211



SKETCH OF CORNER

NOT TO SCALE

CERTIFICATION

I, Steven A. Boyer 9750LS
certify the information shown herein is true and correct.

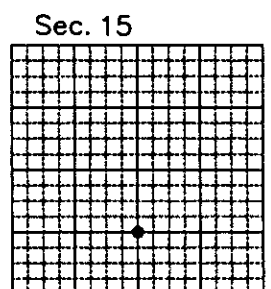
Roger O. Green
Signature of Ground Party

I, Roger O. Green 13769LS
certify that this Corner Record correctly represents work performed by me or under my direction in compliance with the "Corner Recordation Act" (MCA 10-28-101, 101-51, sec. 10, 10-2-2).

Roger O. Green
Signature of Surveyor & Seal

Date: 11/07/2002 Reg. No. 13769LS
Employer: U. S. Forest Service

Office of Clerk and Recorder, County of Lincoln This "corner
record" was filed for record on Jan 30, 2003
was noted on the cross-index plat and is assigned page No. 10589 in
book No. Corral M. Cummings By 213
County Official



• corner this sheet

Cross Index No. M-15 T. 36N. R. 26W. P.M., MT
Adopted July 1, 1981, Montana Board of Professional Engineers & Land Surveyors