

CERTIFIED CORNER RECORDATION

Corner 1/4 Secs. ¹⁵22 T 36 N. R. 26 W. P.M.M. LINCOLN County

- I. Record: 1893 Original Record by Peter M. Cardell & Abraham L. Jaqueth; 40.00 chains. Set a quartzite stone, 16x16x12 ins., 11 ins. in the ground for $\frac{1}{4}$ Sec. Cor. marked $\frac{1}{4}$ on N. face from which:

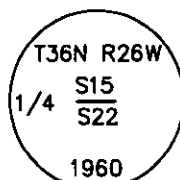
A pine, 13 ins. diam., N43°W, 25 lks., marked $\frac{1}{4}$ S BT.

A tamarack, 22 ins. diam., S68°30'W, 115 lks., marked $\frac{1}{4}$ S BT.

1959 B.L.M. Remonumentation by David R. Cunningham & William E. Stevens: The $\frac{1}{4}$ sec. cor. of secs. 15 and 22, monumented with a limestone, 16x16x12 ins., firmly set and mkd. $\frac{1}{4}$ on the N. face and witnessed by the remains of the original bearing trees.

At the corner point

Set an iron post, 30 ins. long, 2 $\frac{1}{2}$ ins. diam., 28 ins. in the ground, with brass cap mkd.



from which

The remains of the original bearing trees:

A larch, 24 ins. diam., S68 $\frac{1}{2}$ °W, 115 lks. dist., marked with an overgrown blaze. (Record)

A stump, 15 ins. diam., N43°W, 25 lks., marked BT. (Record)

The new bearing trees:

A fir, 10 ins. diam., S25 $\frac{1}{4}$ °W, 44 lks. dist., marked $\frac{1}{4}$ S22 BT.

A fir, 11 ins. diam., N37°W, 70 lks. dist., marked $\frac{1}{4}$ S15 BT.

Bury the original stone alongside and raise a mound of stone, 3 ft. base, 2 ft. high, N. of the iron post.

1981 Certified Corner Recordation by D. K. Marquardt Reg. No. 2989ES: "Found BLM brass cap. See C. of S. No. 915 for adjacent corners.

1981 Certificate of Survey No. 915 by D. K. Marquardt Reg. No. 2989ES: References the $\frac{1}{4}$ sec. cor for secs. 15 and 22 as a found BLM brass cap.

- II. Found a 2 $\frac{1}{2}$ in. diam. iron pipe, 1 ins. above ground with a 3 $\frac{1}{4}$ in. diam. brass cap marked as shown above, from which:

A fir, 17 ins. diam., N37°W, 46.2 ft. dist., marked with a healed face.

A stump, N43°W, 16.5 ft. dist., marked with visible ax marks.

A fir, 22 ins. diam., S28°W, 29.0 lks. dist., marked with a healed face.

A stump, S68°W, 76.0 ft. dist., marked with visible ax marks.

- III. Attached Bearing Tree and Land Survey Monument signs to the bearing trees. Painted red bands around the bearing trees.

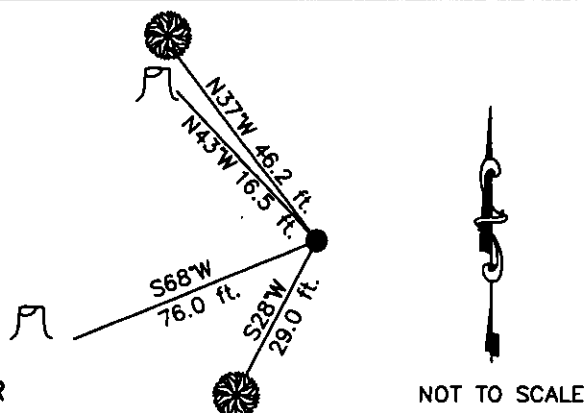
Date of Fieldwork: 9/18/2002

Survey crew: Steve Boyer, Tom Hommel

Magnetic declination: 20° East assumed

Equipment used: Hand compass and loggers tape

U.S. Forest Service, Supervisors Office, 1101 Hwy. 2 West, Libby, MT 59923 (406) 293-6211



SKETCH OF CORNER

NOT TO SCALE

CERTIFICATION

I, Steven A. Boyer 9750 LST
certify the information shown herein is true and correct.

Signature of Land Party ROGER O. GREEN

I, Roger O. Green
certify that this Corner Record corrects previous work performed by me or under my direction in compliance with the "Corner Recordation Act" (79-22-107 M.C.A.)

Signature of Surveyor ROGER O. GREEN
REGISTERED SURVEYOR

Date: 09/18/2002 Reg. No. 13769LS

Employer: U. S. Forest Service

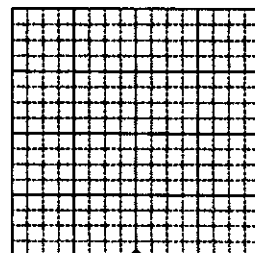
Office of Clerk and Recorder, County of Lincoln This "corner

record" was filed for record on Jan 30, 2003

was noted on the cross-index plat and is assigned page No. 10587 in

book No. Coral M. Cummings By RB
County Official

Sec. 15



• corner this sheet

Cross Index No. N-15 T. 36N. R. 26W. P.M., MT

Adopted July 1, 1981, Montana Board of Professional Engineers & Land Surveyors