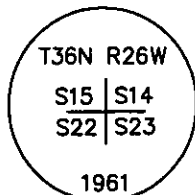


# CERTIFIED CORNER RECORDATION

Corner Sec. cor. secs. 22 | 23 T 36 N. R. 26 W. P.M.M. LINCOLN County

- I. Record: 1893 Original Record by Peter M. Cardell & Abraham L. Jaqueth: 80.00 chains. Set a flint stone 22x10x6 ins., 16 ins. in the ground for Cor. to Secs. 14, 15, 22 & 23, marked with 3 notches on S. and 2 notches on E. sides from which:
- A fir, 8 ins. diam., N8°E, 30 lks., marked T36N R26W S 14 BT.
  - A tamarack, 8 ins. diam., S69°E, 16 lks., marked T36N R26W S 23 BT.
  - A fir, 12 ins. diam., S31°W, 33 lks., marked T36N R26W S 22 BT.
  - A fir, 6 ins. diam., N56°W, 53 lks., marked T36N R26W S 15 BT.
- 1961 B.L.M. Remonumentation by David R. Cunningham and William E. Stephens:  
The cor. of secs. 14, 15, 22 & 23, as determined from the remains of two of the original bearing trees.  
At the corner point  
Set an iron post, 30 ins. long, 2 1/2 ins. diam., 22 ins. in the ground, with brass cap mkd.



From which

The remains of the original bearing trees:

A stump, 16 ins. diam., bears N8°E, 30 lks dist., ft., visible marks BT. (Record)

A stump, 16 ins. diam., bears N56°W, 53 lks dist., ft., visible marks BT. (Record)

The new bearing trees:

A fir, 6 ins. diam., bears S33 1/2°E, 18 lks. dist., mkd. T36N R26W S23 BT.

A larch, 8 ins. diam., bears N18°W, 20 lks. dist., mkd. T36N R26W S15 BT.

1981 Certified Corner Recordation by D. K. Marquardt, Reg. No. 2989ES: "Found BLM brass cap.

See C. of S. No. 915 for adjacent corners."

1981 Certificate of Survey No. 915 by D. K. Marquardt, Reg. No. 2989ES: References the corner for secs. 14, 15, 22 and 23 as a found BLM brass cap.

- II. Found a 2 1/2 in. diam. iron pipe, 6 ins. above ground with a 3 1/4 in. diam. brass cap marked as shown above, from which:
- A fir stump, 18 ins. diam., N8°E, 19.8 ft. dist., marked with a visible S 4.
  - A larch root crown, S69°E, 10.6 ft. dist., no visible marks.
  - A rotten fir stump, N56°W, 35.0 ft. dist., no visible marks.
  - A larch, 14 ins. diam., N20°W, 13.4 ft. dist., marked with a healed face.
  - A fir, 14 ins. diam., S32°E, 11.4 ft. dist., marked with a healed face.

- III. Establish two new bearing trees:

A fir, 6 ins. diam., N48°E, 24.2 ft. dist., marked T36N R26W S 14 BT.

A fir, 9 ins. diam., S34°W, 20.7 ft. dist., marked T36N R26W S 22 BT.

Attached Bearing Tree and Land Survey Monument signs to the bearing trees. Painted red bands around the bearing trees.

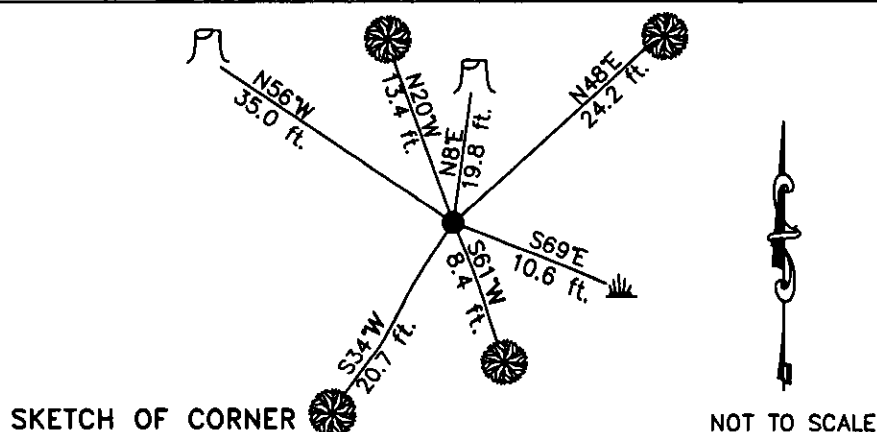
Date of Fieldwork: 9/24/2002

Survey crew: Steve Boyer, Tom Hommel

Magnetic declination: 20° East assumed

Equipment used: Hand compass and loggers tape

U.S. Forest Service, Supervisors Office, 1101 Hwy. 2 West, Libby, MT 59923 (406) 293-6211



SKETCH OF CORNER

NOT TO SCALE

## CERTIFICATION

I, Steven A. Boyer, REGISTERED SURVEYOR,  
certify the information shown herein is true and correct.  
Signature of Ground Party  
Roger O. Green  
I, Roger O. Green,  
certify that this Corner Record corrects/represents work  
performed by me or under my direction in compliance with  
the "Corner Recordation Act" (29-22-101 MCA).  
Signature of Surveyor

Date: 09/24/2002 Reg. No. 13769LS

Employer: U. S. Forest Service

Office of Clerk and Recorder, County of Lincoln This "corner

record" was filed for record on Jan 30, 2003

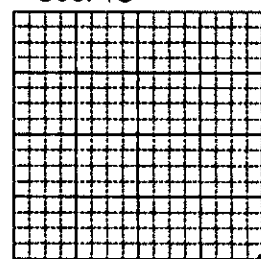
was noted on the cross-index plat and is assigned page No. 10586 in

book No. Corral M. Cunningham By RB  
County Official

Cross Index No. N-17 T. 36N. R. 26W. P.M., MT

Adopted July 1, 1981, Montana Board of Professional Engineers & Land Surveyors

Sec. 15



• corner this sheet