

CERTIFIED LAND CORNER RECORDATION
(REFERENCE FSM 7153.53)

DESCRIPTION OF CORNER EVIDENCE FOUND, AND ORIGINAL RECORD (IF KNOWN)

Found a 2 1/2" B.L.M. brass cap appr. 3" above ground. Collar of stone. Marked as shown:
Brass cap not secure on pipe.
From which: A 20" ponderosa pine bears N72°W., 160.8 ft. Scribing visible, alive and well.
A 20" ponderosa pine bears S83°W., 132.8 ft. Healed face, alive and well.
A 12" pine bears N54°E., 59.7 ft., scribing visible, alive and well.

1960 B.L.M. record, from found original evidence: Set a 2 1/2" iron pipe with brass cap.
Marked as shown:
From which: A 6" pine bears N56 3/4°E., 91 lks.
A 14" pine bears N69 1/4°W., 244 1/2 lks.
A 14" pine bears S84 3/4°W., 201 1/2 lks.

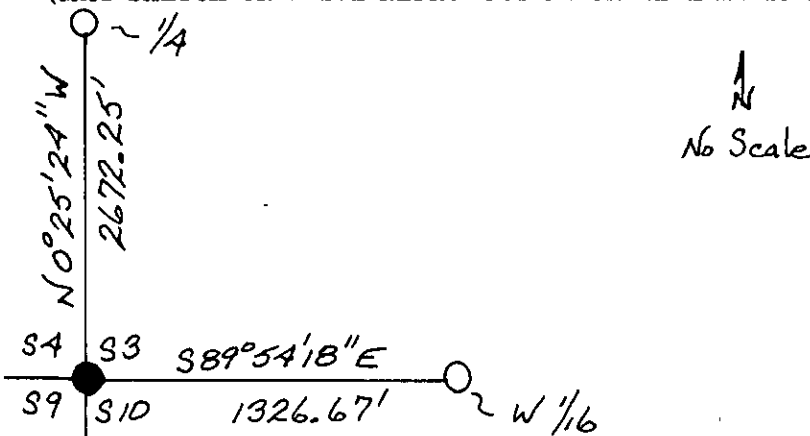


DESCRIPTION OF MONUMENT AND ACCESSORIES ESTABLISHED
TO PERPETUATE THE ORIGINAL LOCATION OF THIS CORNER:

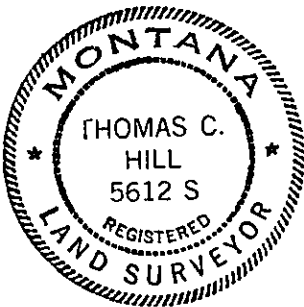
Date of work: 10/27/80

Painted red bands around bearing trees.
Attached 1 bearing tree sign.

SKETCH, WITH COURSE AND DISTANCE TO ADJACENT CORNERS IF DETERMINED IN THIS SURVEY.
(MAY SKETCH OR PASTE REPRODUCTION ON REVERSE SIDE.)



Surveyor's Seal



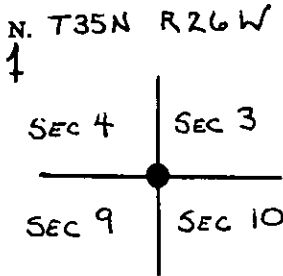
I, Anthony J. Bachman
certify that the information shown herein is true and correct.

Anthony J. Bachman
Signature of Ground Party Chief

I, Thomas C. Hill
certify that I have carefully performed or reviewed the work done on the diagrammed corner as reported on this recordation form and approve the same.

Thomas C. Hill
Signature of Surveyor

DIAGRAM OF CORNER:



● = Corner recorded on the sheet

5612-S
Registration Number

Office of Clerk and Recorder, County of Lincoln

This "corner record" was filed for record on the 15th day of December 1980, was noted on the cross-index plat and is assigned page No. 956, in book No. 1

Elmer L. Vaughn, Jr. Deputy
County Official

Cross Index No. E-13 T. 35N R. 26W Mer.

10/10/10

10/10/10

10/10/10

10/10/10

10/10/10

10/10/10

10/10/10

10/10/10

10/10/10

10/10/10

10/10/10

10/10/10

10/10/10

10/10/10

10/10/10

10/10/10

10/10/10

10/10/10

10/10/10

10/10/10

10/10/10

10/10/10

10/10/10

10/10/10

10/10/10

10/10/10

10/10/10

10/10/10

10/10/10

10/10/10

10/10/10

10/10/10

10/10/10

10/10/10

10/10/10

10/10/10

10/10/10

10/10/10

10/10/10

10/10/10

10/10/10

10/10/10

10/10/10

10/10/10

10/10/10

10/10/10

10/10/10

10/10/10

10/10/10

10/10/10

10/10/10

10/10/10

10/10/10

10/10/10

10/10/10

10/10/10

10/10/10

10/10/10

10/10/10

10/10/10

10/10/10

10/10/10

10/10/10

10/10/10

10/10/10

10/10/10

10/10/10

10/10/10

10/10/10

10/10/10

10/10/10

10/10/10

10/10/10

10/10/10

10/10/10

10/10/10

10/10/10

10/10/10

10/10/10