

CERTIFIED CORNER RECORDATION

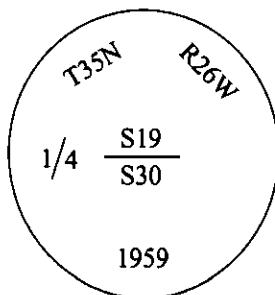
Corner S 1/4 Sec. 19 T. 35N R. 26W P.M., MT Lincoln County

- I. 1894 G.L.O. Original record by Abram L. Jaqueth: Set a wooden post, 3 ft. long, 3 ins. square, 24 ins. in the ground, for 1/4 Sec. Cor., mkd. "1/4 S" on the N. face.

From which:

A fir, 7 ins. diam., bears S80°E, 33 lks. dist., mkd. "1/4 S BT".
A fir, 12 ins. diam., bears N75°W, 75 lks. dist., mkd. "1/4 S BT".

1959 B.L.M. Remonumentation record by David R. Cunningham: The 1/4 sec. cor. of secs. 19 & 30, as determined from the original bearing trees. At the corner point, set an iron post, 30 ins. long, 2 1/2 ins. diam., 27 ins. in the ground, in concrete, with brass cap mkd. as shown:



From which, the original bearing trees:

A fir, 17 ins. diam., bears S66°E, 33 lks. dist., mkd. "1/4 S". (Rec.- S80°E, 33 lks. dist.)
A fir, 22 ins. diam., bears N61°W, 75 lks. dist., mkd. "1/4 S32 BT". (Rec.-N75°W, 75 lks. dist.)

Raise a mound of stone, 3 ft. base, 1.5 ft. high, N. of the iron post.

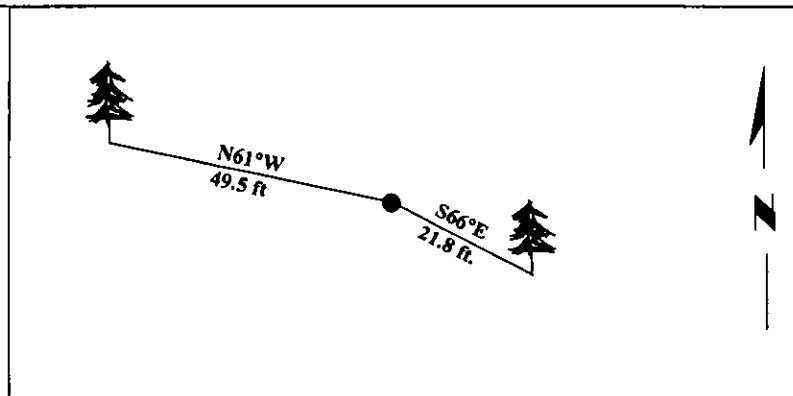
- II. Found a 2 1/2 in. diam. iron post, firmly set, protruding 3 ins. above the ground, with a 3 1/4 in. diam. brass cap mkd. as shown above.

From which:

A fir, 20 ins. diam., bears S66°E, 21.8 ft. (33 lks.) dist., mkd. with a healed face.
A fir, 22 ins. diam., bears N61°W, 49.5 ft. (75 lks.) dist., mkd. with visible scribe.

- III. Painted bearing trees and attached Land Survey Monument and Bearing Tree signs.

Magnetic Declination: 20° East.



SKETCH OF CORNER

CERTIFICATION	
I. <u>Mark Federman</u>	certify the information shown herein is true and correct.
<i>Mark Federman</i>	
I. <u>Alvah F. Hughes</u>	certify that this Corner Record correctly represents work performed by me or under my direction in compliance with the "Corner Recordation Act" (70-22-101, et seq., M.C.A.)
<i>Alvah F. Hughes</i>	
Signature of Surveyor & Seal	
Date: <u>12/26/96</u>	
Reg. No.: <u>7322LS</u>	
Employer: <u>U.S. FOREST SERVICE</u>	

Office of Clerk and Recorder, County of LINCOLN. This "corner record" was filed for record on FEB 3, 1997 and was noted on the cross-index plat and is assigned page No. 9215, in book No. CORAL M. CUMMINGS *By JLB*

County Official

Cross Index No.

R-3

T.

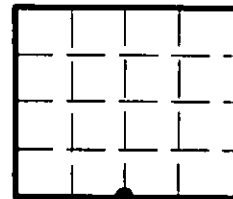
35N

R.

26W

P.M., MT

Sec. 19



• - corner this sheet

