

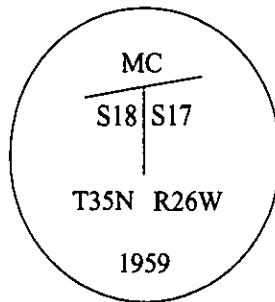
# CERTIFIED CORNER RECORDATION

Corner South MC Secs. 17&18 T. 35N R. 26W P.M., MT Lincoln County

- I. 1894 G.L.O. Original record by Abram L. Jaqueth: Set a quartzite stone, 16x10x6 ins., 11 ins. the ground, for meander cor. to frac. secs. 17 & 18, mkd. "MC" on the N. face. From which:

A fir, 14 ins. diam., bears N60°E, 20 lks. dist., scribed "T35N R26W S17 MC BT".  
A fir, 9 ins. diam., bears N77°30'W, 11 lks. dist., scribed "T35N R26W S18 MC BT".

1959 B.L.M. record by David R. Cunningham: The meander cor. of secs. 17 and 18, on the S. shore of Frank's Lake, determined at record bearing and distance from the stump of the orig. N.E. bearing tree. At the corner point, set an iron post, 30 ins. long, 2 1/2 ins. diam., 27 ins. in the ground, in concrete, with brass cap mkd. as shown:



From which, the new bearing trees:

A fir, 6 ins. diam., bears S40 1/4°E, 43 lks. dist., mkd. "T35N R26W S17 MC BT"  
A fir, 6 ins. diam., bears S33 1/4°W, 20 lks. dist., mkd. "T35N R26W S18 MC BT"

Raise a mound of stone, 3 ft. base, 2 ft. high, S. of the iron post.

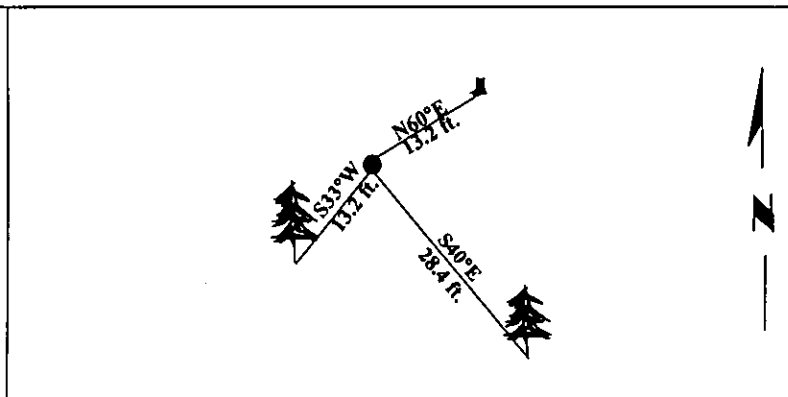
- II. Found a 2 1/2 in. diam. iron post, firmly set, protruding 3 ins. above ground, with a 3 1/4 in. diam. B.L.M. brass cap, mkd. as shown above.

From which:

A stump, bears N60°E, 13.2 ft. (20 lks.) dist., mkd. with a chopped face.  
A fir, 10 ins. diam., bears S40°E, 28.4 ft. (43 lks.) dist., mkd. with a healed face.  
A fir, 10 ins. diam., bears S33°W, 13.2 ft. (20 lks.) dist., mkd. with a healed face.  
No evidence found of orig. NW bearing tree.  
A steel guard post, bears East, 2.0 ft. dist., with LSM decal affixed.  
A mound of stone, bears South, 1.0 ft. dist. from monument.

- III. Painted bearing trees and attached Land Survey Monument and Bearing Tree signs.

Magnetic Declination: 20° East.

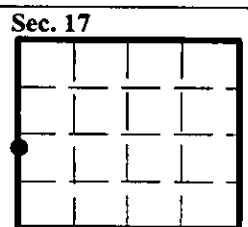


SKETCH OF CORNER

CERTIFICATION	
I, <u>Mark Federman</u>	certify the information shown herein is true and correct.
<i>Mark Federman</i>	
I, <u>Alvah F. Hughes</u>	certify that this Corner Record correctly represents work performed by me or under my direction in compliance with the "Corner Recordation Act" (70-22101, 1st sess. M.C.A.)
<i>Alvah F. Hughes</i>	
Signature of Surveyor & Seal	
Date: <u>12/26/96</u>	
Reg. No.: <u>7322LS</u>	
Employer: <u>U.S. FOREST SERVICE</u>	

Office of Clerk and Recorder, County of LINCOLN. This "corner record" was filed for record on FEB 3, 1997 and was noted on the cross-index plat and is assigned page No. 9214, in book No. CORAL M. CUMMINGS By DJB

County Official



• - corner this sheet

