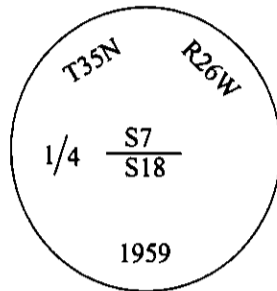


CERTIFIED CORNER RECORDATION

Corner 1/4 Sec. 7 & 18 T. 35N R. 26W P.M., MT Lincoln County

I. 1894 G.L.O. Original record by Abram L. Jaqueth: Set a limestone and two bearing trees.

1959 B.L.M. record by David R. Cunningham: The 1/4 sec. cor. of secs. 7 & 18, monumented with a limestone, 18x12x4 ins., firmly set, mkd. 1/4 on N. face, and witnessed by the original bearing trees. At the corner point, set an iron post, 30 ins. long, 2 1/2 ins. diam., 27 ins. in the ground, in concrete, with brass cap mkd. as shown below:



From which, the orig. bearing trees:

- A fir, 17 ins. diam., bears S20°E, 84 lks. dist., mkd. "1/4 S BT". (record)
- A larch, 15 ins. diam., bears N22°W, 118 lks. dist., mkd. "1/4 S". (record)

From which, the new bearing trees:

- A larch, 8 ins. diam., bears N44 3/4°E, 35 lks. dist., mkd. "1/4 S7 BT".
- A fir, 7 ins. diam., bears S26°W, 20 lks. dist., mkd. "1/4 S18 BT".

Bury original stone alongside and raise a mound of stone, 3 ft. base, 2 ft. high, N. of the iron post.

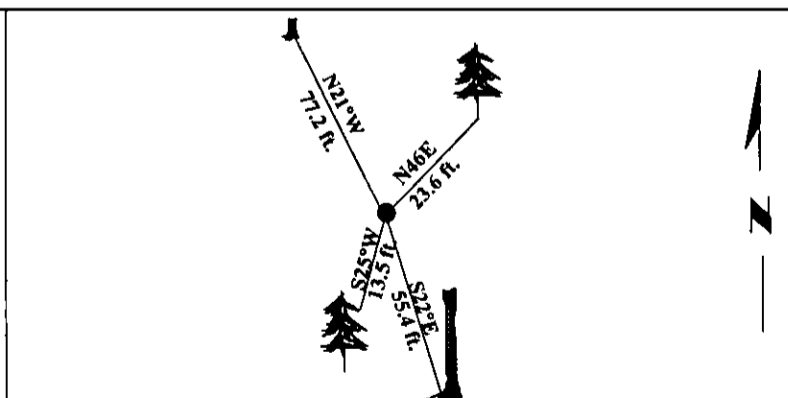
II. Found a 2 1/2 in. diam. iron post, firmly set, protruding 2 ins. above the ground, with a 3 1/4 in. diam. B.L.M. brass cap, mkd. as shown above.

From which:

- A larch, 10 ins. diam., bears N46°E, 23.6 ft. (35 lks.) dist., mkd. with a healed face.
- A fir snag, 18 ins. diam., bears S22°E, 55.4 ft. (84 lks.) dist., with no visible scribe.
- A fir, 11 ins. diam., bears S25°W, 13.5 ft. (20 lks.) dist., mkd. with a healed face.
- A larch stump, 14 ins. diam., bears N21°W, 77.2 ft. (117 lks.) dist., mkd. with visible scribe.
- A mound of stone, 2 ft. diam., bears North, 1.0 ft. from monument.

III. Painted bearing trees and attached Land Survey Monument and Bearing Tree signs.

Magnetic Declination: 20° East.



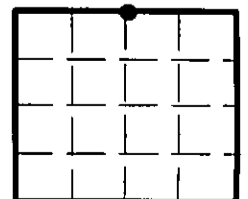
SKETCH OF CORNER

CERTIFICATION	
I. <u>Mark Federman</u>	certify the information shown herein is true and correct.
<u>Mark Federman</u>	
I. <u>Alvah F. Hughes</u>	
certify that this Corner Record correctly represents work performed by me or under my direction in compliance with the "Corner Recordation Act" (73-22-101, et seq., M.C.A.)	
<u>Alvah F. Hughes</u>	
Signature of Surveyor & Seal	
Date: <u>12/26/96</u>	
Reg. No.: <u>7322LS</u>	
Employer: <u>U.S. FOREST SERVICE</u>	

Office of Clerk and Recorder, County of LINCOLN. This "corner record" was filed for record on FEB 3, 1997 and was noted on the cross-index plat and is assigned page No. 9212 in book No. CORAL M. CUMMINGS

County Official [Signature]

Sec. 18



• - corner this sheet

