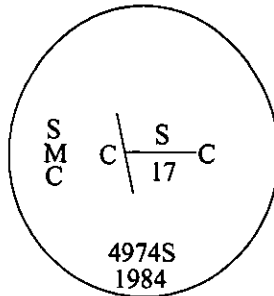


# CERTIFIED CORNER RECORDATION

Corner SMC Sec. 17 T. 35N R. 26W P.M., MT Lincoln County

- I. 1984 Certified Corner Recordation by Gerald E. Bunton, Reg. No. 4974S: On file at the Lincoln County Courthouse. Set a U.S.F.S. 3 1/4 in. diam. aluminum cap, on a 5/8 in. diam. alum. rod, in a small collar of stone. Cap mkd. as shown:



From which:

- A fir, 9 in. diam., bears S10°E, 67.6 ft. dist., scribed "S17 SMC BT".  
A fir, 11 in. diam., bears N77°E, 34.5 ft. dist., scribed "S17 SMC BT".  
Set a steel guard post with property boundry and survey marker decals affixed, North, 1.8 feet.  
Set a wooden post, East, 4.3 feet.

- II. Found a 3/4 in. alum. rod, with a 3 1/4 in. diam. alum. cap, firmly set, protruding 4 in. above the ground, and mkd. as shown above.

From which:

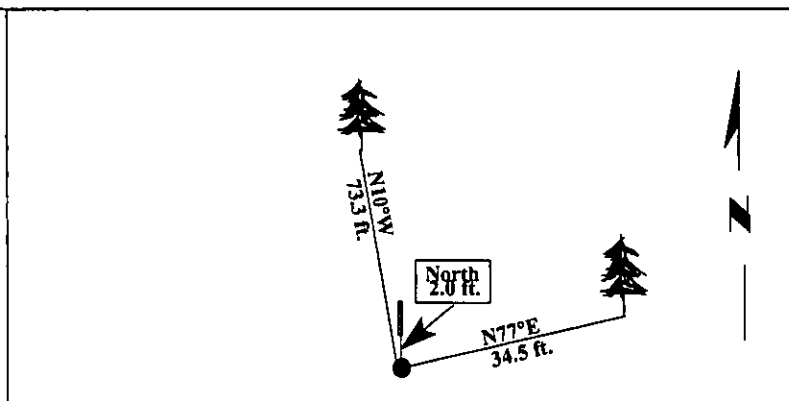
- A fir, 13 in. diam., bears N77°E, 34.5 ft. dist., mkd. with visible scribe.  
A steel guard post, bears North, 2.0 ft., with LSM & PB. decals.

- III. Established one new bearing tree:

- A fir, 11 ins. diam., bears N10°W, 73.3 ft. dist., scribed "SMC S17 BT".

Painted bearing trees and attached Land Survey Monument and Bearing Tree signs.

Magnetic Declination: 20° East.



SKETCH OF CORNER

## CERTIFICATION

I. Mark Federman

certify the information shown herein is true and correct.

*Mark Federman*

I. Alvah F. Hughes

certify that this Corner Record correctly represents work performed by me or under my direction in compliance with the "Corner Recordation Act" (70-22-101, et seq., M.C.A.).

*Alvah F. Hughes*

Signature of Surveyor & Seal

Date: 12/24/96

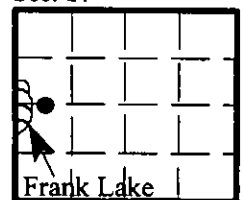
Reg. No.: 7322LS

Employer: U.S. FOREST SERVICE

Office of Clerk and Recorder, County of LINCOLN. This "corner record" was filed for record on FEB 3, 1997 and was noted on the cross-index plat and is assigned page No. 9210, in book No. CORAL M. CUMMINGS

County Official *B. J. B.*

Sec. 17



• - corner this sheet

Cross Index No. L-5.5 T. 35N R. 26W P.M., MT

