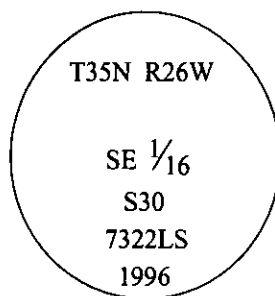


# CERTIFIED CORNER RECORDATION

Corner SE 1/16 Sec. 30 T. 35N R. 26W P.M., MT Lincoln County

- I. No previous history.
- II. Nothing found.
- III. At the position determined by survey, set a 3/4 in. diam., 30 in. long aluminum rod, 26 ins. in the ground, with a 3 1/4 in. diam. alum. cap, marked as shown.

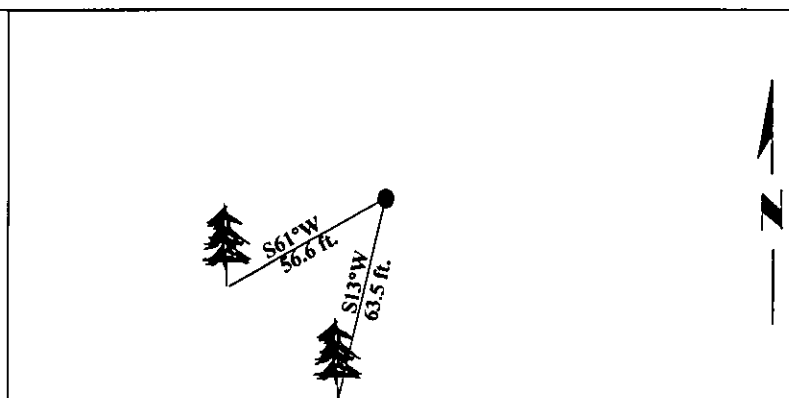


Established two bearing trees:

- A fir, 13 ins. diam., bears S13°W, 63.5 ft. dist., scribed "SE 1/16 S30 BT".
- A fir, 11 ins. diam., bears S61°W, 56.6 ft. dist., scribed "SE 1/16 S30 BT".

Painted bearing trees and attached Land Survey Monument and Bearing Tree signs.

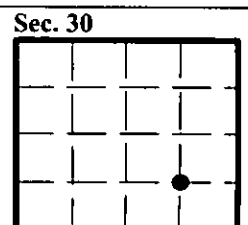
Magnetic Declination: 20° East.



SKETCH OF CORNER

<p>CERTIFICATION</p> <p>I, <u>Thomas M. Hommel</u>  certify the information shown herein is true and correct.</p> <p>I, <u>Alvah F. Hughes</u>  certify that this Corner Record correctly represents work performed by me or under my direction in compliance with the "Corner Recordation Act" (70-22-101 et seq., M.C.A.)</p> <p>Signature of Surveyor &amp; Seal</p> <p>Date: <u>11/21/96</u></p> <p>Reg. No.: <u>7322LS</u></p> <p>Employer: <u>U.S. FOREST SERVICE</u></p>		
---	--	--

Office of Clerk and Recorder, County of LINCOLN. This "corner record" was filed for record on FEB 3, 1997 and was noted on the cross-index plat and is assigned page No. 9207, in book No. CORAL M. CUMMINGS County Official [Signature]



• - corner this sheet

