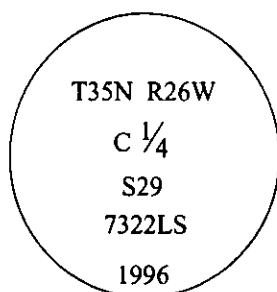


CERTIFIED CORNER RECORDATION

Corner C 1/4 Sec. 29 T. 35N R. 26W P.M., MT Lincoln County

- I. No previous history.
- II. Nothing found.
- III. At the position determined by survey, set a 3/4 in. diam., 30 in. long aluminum rod, in the ground, with a 3 1/4 in. diam. alum. cap, marked as shown.

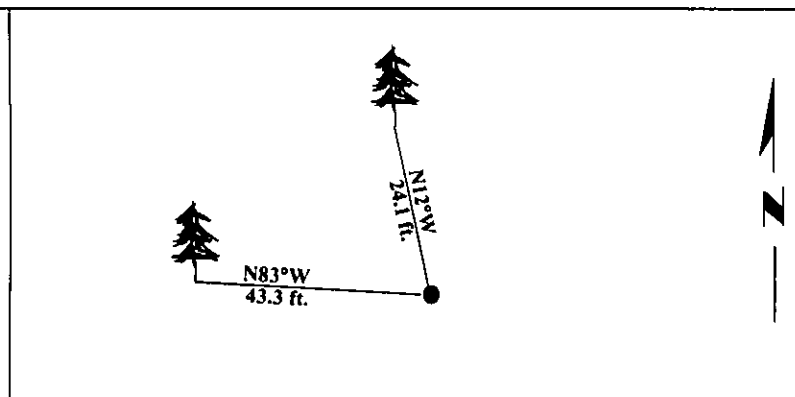


Established two bearing trees:

- A fir, 11 ins. diam., bears N83°W, 43.3 ft. dist., scribed "C 1/4 S29 BT".
- A fir, 14 ins. diam., bears N12°W, 24.1 ft. dist., scribed "C 1/4 S29 BT".

Painted bearing trees and attached Land Survey Monument and Bearing Tree signs.

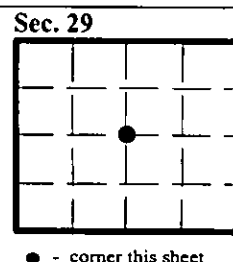
Magnetic Declination: 20° East.



SKETCH OF CORNER

CERTIFICATION	
I, <u>Thomas M. Hommel</u>	certify the information shown herein is true and correct.
<i>Thomas M. Hommel</i>	
I, <u>Alvah F. Hughes</u>	certify that this Corner Record correctly represents work performed by me or under my direction in compliance with the "Corner Recordation Act" (70-22-101, et seq., M.C.A.)
<i>Alvah F. Hughes</i>	
Date: <u>11/21/96</u>	Signature of Surveyor's Seal
Reg. No.: <u>7322LS</u>	
Employer: <u>U.S. FOREST SERVICE</u>	

Office of Clerk and Recorder, County of LINCOLN. This "corner record" was filed for record on FEB 3, 1997 and was noted on the cross-index plat and is assigned page No. 9206, in book No. CORAL M. CUMMINGS County Official B. DFB



• - corner this sheet

