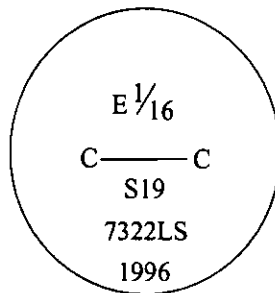


CERTIFIED CORNER RECORDATION

Corner CE 1/16 Sec. 19 T. 35N R. 26W P.M., MT Lincoln County

- I. No previous history.
- II. Nothing found.
- III. At the position determined by survey, set a 3/4 in. diam., 30 in. long aluminum rod, 27 ins. in the ground, with a 3 1/4 in. diam. alum. cap, marked as shown.

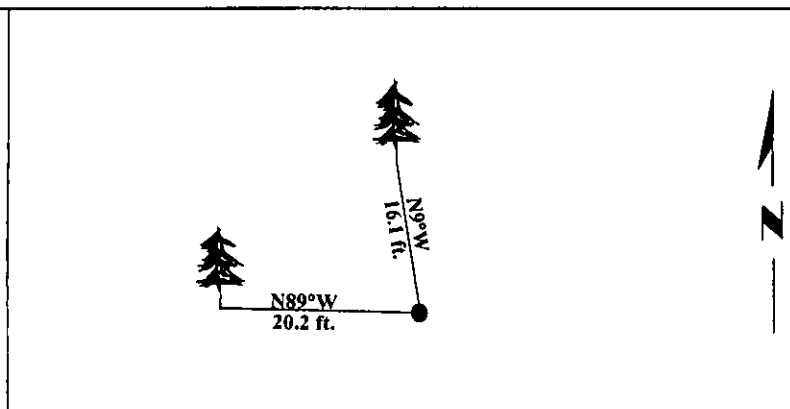


Established two bearing trees:

- A fir, 11 ins. diam., bears N89°W, 20.2 ft. dist., scribed "CE 1/16 S19 BT".
- A fir, 8 ins. diam., bears N9°W, 16.1 ft. dist., scribed "CE 1/16 S19 BT".

Painted bearing trees and attached Land Survey Monument and Bearing Tree signs.

Magnetic Declination: 20° East.



SKETCH OF CORNER

CERTIFICATION

I, Mark Federman

certify the information shown herein is true and correct.

I, Alvah F. Hughes

certify that this Corner Record correctly represents work performed by me or under my direction in compliance with the "Corner Recordation Act" (70-22-101, et seq., M.C.A.)

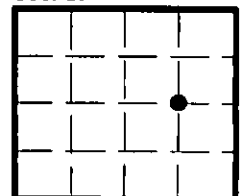
Alvah F. Hughes
Signature of Surveyor & Seal

Date: 11/21/96

Reg. No.: 7322LS

Employer: U.S. FOREST SERVICE

Sec. 19



• - corner this sheet

Office of Clerk and Recorder, County of LINCOLN. This "corner record" was filed for record on FEB 3 1997 and was noted on the cross-index plat and is assigned page No. 9204, in book No. CORAL M. CUMMINGS

County Official RJ AFB

Cross Index No.

P-4

T.

35N

R.

26W

P.M., MT



...

...