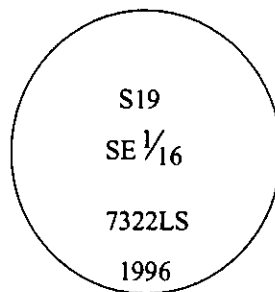


# CERTIFIED CORNER RECORDATION

Corner SE 1/16 Sec. 19 T. 35N R. 26W P.M., MT Lincoln County

- I. No previous history.
- II. Nothing found.
- III. At the position determined by survey, set a 3/4 in. diam., 30 in. long aluminum rod, 28 ins. in the ground, with a 3 1/4 in. diam. alum. cap, marked as shown.

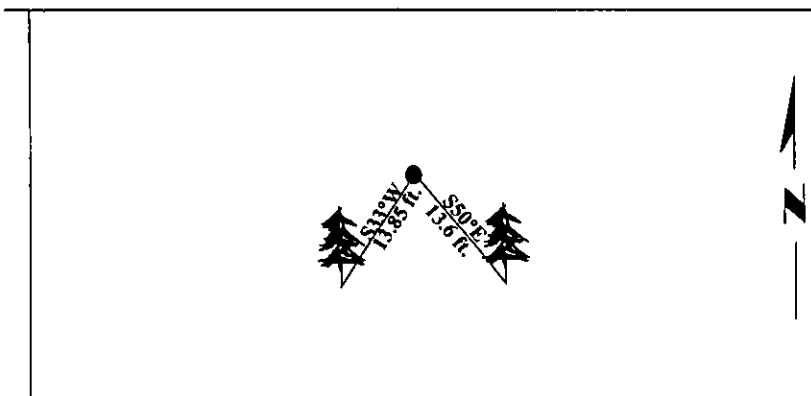


Established two bearing trees:

- A fir, 11 ins. diam., bears S50°E, 13.6 ft. dist., scribed "SE 1/16 S19 BT".
- A fir, 14 ins. diam., bears S33°W, 13.85 ft. dist., scribed "SE 1/16 S19 BT".

Painted bearing trees and attached Land Survey Monument and Bearing Tree signs.

Magnetic Declination: 20° East.

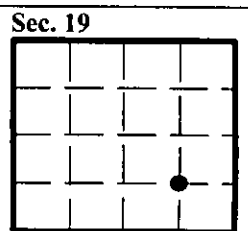


SKETCH OF CORNER

<p><b>CERTIFICATION</b></p> <p>I, <u>Mark Federman</u>  <small>certify the information shown herein is true and correct.</small></p> <p><i>Mark Federman</i></p>	
<p>I, <u>Alvah F. Hughes</u>  <small>certify that this Corner Record correctly represents work performed by me or under my direction in compliance with the "Corner Recordation Act" (70-22101, 1st sec., M.C.A.)</small></p> <p><i>Alvah F. Hughes</i>  <small>Signature of Surveyor &amp; Seal</small></p>	
<p>Date: <u>11/21/96</u></p>	
<p>Reg. No.: <u>7322LS</u></p>	
<p>Employer: <u>U.S. FOREST SERVICE</u></p>	

Office of Clerk and Recorder, County of LINCOLN. This "corner record" was filed for record on FEB 3, 1997 and was noted on the cross-index plat and is assigned page No. 9203, in book No. CORAL M. CUMMINGS

County Official *[Signature]*



• - corner this sheet

