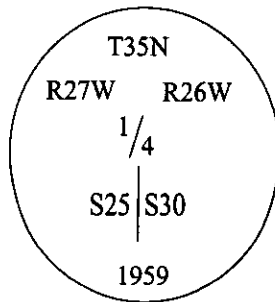


# CERTIFIED CORNER RECORDATION

Corner W 1/4 Sec. S30 T. 35N R. 26W P.M., MT Lincoln County

I. 1894 G.L.O. Original record surveyed by Abram L. Jaqueth: Set a wooden post, and two bearing trees.

1959 B.L.M. record surveyed by David R. Cunningham et. al.: The 1/4 sec. cor. of secs. 19 & 24, determined from the remains of the two original bearing trees. A portion of the original wooden post, mkd. "1/4 S" on one face, was found lying on the ground. At the corner point, set an iron post, 30 ins. long, 2 1/2 ins. diam., 28 ins. in the ground, in concrete, with brass cap marked:



Established one new bearing tree.

Buried the remains of the original wooden post alongside the iron post.

II. Found a 2 1/2 in. diam. iron pipe, firmly set, protruding 5 ins. above the ground, with a 3 1/4 in. diam. brass cap, mkd. as shown above.

From which:

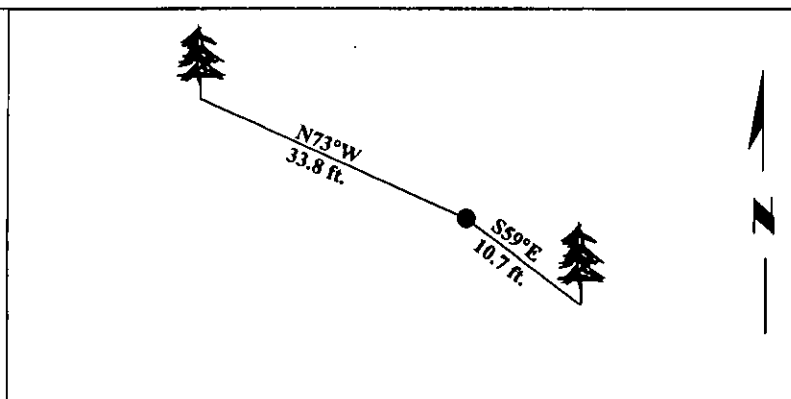
A fir, 12 ins. diam., bears S59°E, 10.7 ft. (16 lks.) dist., mkd. with visible scribe. (G.L.O. record-S63°E, 17 lks.)

A fir, 11 ins. diam., bears N73°W, 33.8 ft. (51 lks.) dist., with a healed face. (B.L.M. record-N71°W, 49 lks.)

No evidence found of G.L.O. bearing tree at N76°W, 31 lks. distant.

III. Painted bearing trees and attached Land Survey Monument and Bearing Tree signs.

Magnetic Declination: 20° East.



SKETCH OF CORNER

## CERTIFICATION

I. Lisa Stamy

certify the information shown herein is true and correct.

I. Alvah F. Hughes

certify that this Corner Record correctly represents work performed by me or under my direction in compliance with the "Corner Recordation Act" (70-22-101, et seq., M.C.A.)

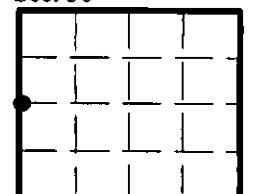
Alvah F. Hughes  
Signature of Surveyor & Seal

Date: 12/23/96

Reg. No.: 7322LS

Employer: U.S. FOREST SERVICE

Sec. 30



• - corner this sheet

Office of Clerk and Recorder, County of LINCOLN. This "corner record" was filed for record on FEB 3, 1997 and was noted on the cross-index plat and is assigned page No. 9202, in book No. CORAL M. CUMMINGS By DJB

County Official

Cross Index No.

T-1

T.

35N

R.

26W

P.M., MT

