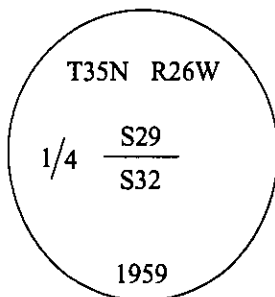


# CERTIFIED CORNER RECORDATION

Corner S 1/4 Sec. 29 T. 35N R. 26W P.M., MT Lincoln County

I. 1894 G.L.O. Original record by Abram L. Jaqueth: Set a wooden post and two bearing trees.

1959 B.L.M. Remonumentation record by David R. Cunningham: The 1/4 sec. cor. of secs. 29 & 32, determined from the remains of the two original bearing trees. A portion of the original wooden post, mkd. "1/4 S" on one face, was found lying on the ground. At the corner point, set an iron post, 30 ins. long, 2 1/2 ins. diam., 25 ins. in the ground, in concrete, with brass cap marked:



Established two new bearing trees.

Bury the remains of the original wooden post alongside the iron post and raise a mound of stone, 2 ft. base, 1.5 ft. high, N. of the iron post.

II. Found a 2 1/2 in. diam. iron post, protruding 2 ins. above the ground, firmly set at the base of a 21 in. diam. larch, with a 3 1/4 in. diam. B.L.M. brass cap mkd. as shown above.

From which:

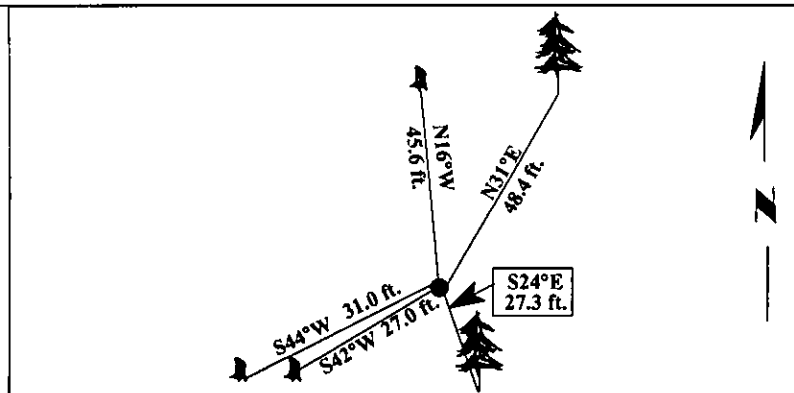
- A fir, 10 ins. diam., bears N32°E, 48.4 ft. dist., mkd. with a healed face. (B.L.M. record)
- A fir stump, 13 ins. diam., bears S43°W, 27.0 ft. dist., mkd. with visible scribe. (G.L.O. record)
- A fir stump, 14 ins. diam., bears S45°W, 31.0 ft. dist., mkd. with visible scribe. (B.L.M. record)
- A larch stump, 13 ins. diam., bears N16°W, 45.6 ft. dist., mkd. with visible scribe. (G.L.O. record)

III. Established one new bearing tree:

A fir, 9 ins. diam., bears S24°E, 27.3 ft. dist., scribed "1/4 S32 BT".

Painted bearing trees and attached Land Survey Monument and Bearing Tree signs.

Magnetic Declination: 20° East.



SKETCH OF CORNER

CERTIFICATION

I, Lisa Stamy  
certify the information shown herein is true and correct.

I, Alvah F. Hughes  
certify that this Corner Record correctly represents work performed by me or under my direction in compliance with the "Corner Recordation Act" (70-22-101, et seq., M.C.A.)

Alvah F. Hughes  
Signature of Surveyor & Seal

Date: 12/29/96

Reg. No.: 7322LS

Employer: U.S. FOREST SERVICE

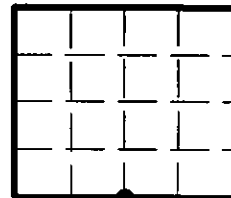
LINCOLN

Office of Clerk and Recorder, County of \_\_\_\_\_ This "corner record" was filed for record on FEB 3, 1997 and was noted on the cross-index plat and is assigned page No. 9201, in book No. \_\_\_\_\_

CORAL M. CUMMINGS

County Official

Sec. 29



• - corner this sheet

Cross Index No.

V-7

T.

35N

R.

26W

P.M., MT

