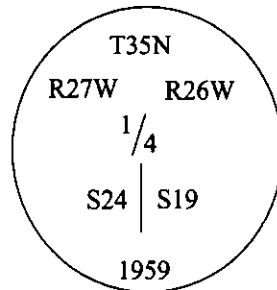


CERTIFIED CORNER RECORDATION

Corner W 1/4 Sec. S19 T. 35N R. 26W P.M., MT Lincoln County

I. 1894 G.L.O. Original record by Abram L. Jaqurth: Set a limestone and two bearing trees.

1959 B.L.M. Remonumentation record by David R. Cunningham: The 1/4 sec. cor. of secs. 19 & 24, monumented with a limestone, 10x6x4 ins., set and marked as described in the official record and witnessed by the remains of the two original bearing trees. At the corner point, set an iron post, 30 ins. long, 2 1/2 ins. diam., 26 ins. in the ground, in concrete, with brass cap marked:



Established two new bearing trees.

Buried original stone alongside and raise a mound of stone, 3 ft. base, 2 ft. high, West of iron post.

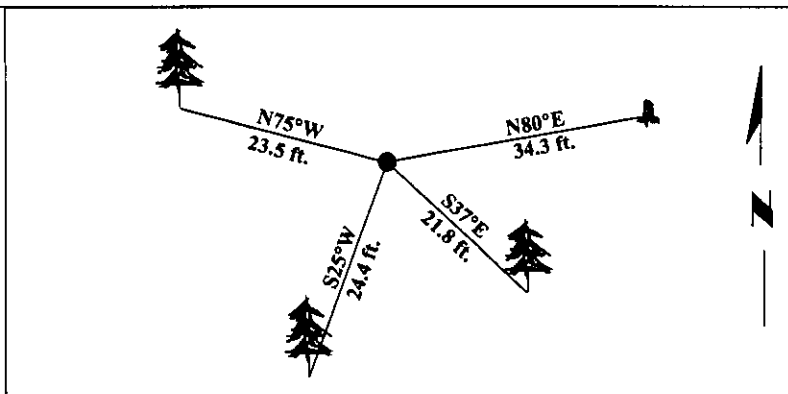
II. Found a 2 1/2 in. diam. iron pipe, firmly set, protruding 4 ins. above the ground, with a 3 1/4 in. diam. brass cap, mkd. as shown above.

From which:

- A larch stump, 22 ins. diam., bears N80°E, 34.3 ft. (52 lks.) dist., with no visible scribe. (G.L.O. record)
- A fir, 9 ins. diam., bears S37°E, 21.8 ft. (33 lks.) dist., mkd. with visible scribe. (B.L.M. record)
- A fir, 23 ins. diam., bears S25°W, 24.4 ft. (37 lks.) dist., mkd. with visible scribe. (G.L.O. record)
- A larch, 11 ins. diam., bears N75°W, 23.5 ft. (35 lks.) dist., mkd. with visible scribe. (B.L.M. record- N65 1/4°W, 33 lks.)

III. Painted bearing trees and attached Land Survey Monument and Bearing Tree signs.

Magnetic Declination: 20° East.

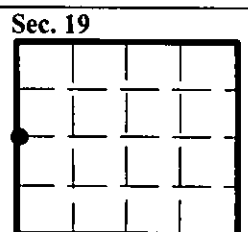


SKETCH OF CORNER

CERTIFICATION	
I, <u>Lisa Stamy</u>	certify the information shown herein is true and correct.
I, <u>Alvah F. Hughes</u>	
certify that this Corner Record correctly represents work performed by me or under my direction in compliance with the "Corner Recordation Act", (70-22-101, et seq., M.C.A.)	
<u>Alvah F. Hughes</u>	
Date: <u>12/23/96</u>	Signature of Surveyor
Reg. No.: <u>7322LS</u>	
Employer: <u>U.S. FOREST SERVICE</u>	

Office of Clerk and Recorder, County of LINCOLN. This "corner record" was filed for record on FEB 3, 1997 and was noted on the cross-index plat and is assigned page No. 9200, in book No. CORAL M. CUMMINGS

County Official B. J. B.



• - corner this sheet

