

# CERTIFIED CORNER RECORDATION

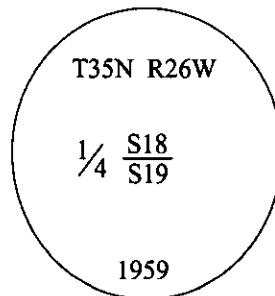
Corner 1/4 Sec. 18 & 19 T. 35N R. 26W P.M., MT Lincoln County

- I. 1894 G.L.O. Original record surveyed by Abram L. Jaqueth: Set a wooden post, 3 ft. long, 3 ins. square, 24 ins. in the ground, for 1/4 Sec. Cor., mkd. "1/4 S." on the North face.

From which:

- A fir, 9 ins. diam., bears S27°30'W, 41 lks. dist., mkd. "1/4 S BT."  
A fir, 15 ins. diam., bears N41°30'W, 15 lks. dist., mkd. "1/4 S BT."

1959 B.L.M. Remonumentation record by David R. Cunningham: The 1/4 sec. corner of secs. 18 & 19, determined by the remains of the original bearing trees. The remains of the original wooden post, mkd. "1/4 S" was found lying on the ground. At the corner point, set an iron post, 30 ins. long, 2 1/2 ins. diam., 27 ins. in the ground, in concrete, with brass cap marked:



Established two new bearing trees:

- A larch, 6 ins. diam., bears S3 1/2°E, 91 lks. dist., mkd. "1/4 S19 BT."  
A fir, 11 ins. diam., bears N61 3/4°W, 21 lks. dist., mkd. "1/4 S18 BT."

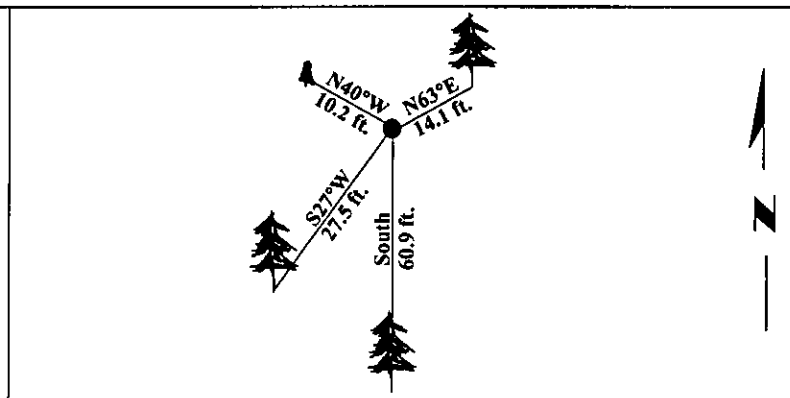
Buried the remains of the original post alongside and raise a mound of stone, 2 ft. base, 1 1/2 ft. high, North of the iron post.

- II. Found a 2 1/2 in. diam. iron pipe, in a collar of stone, firmly set, protruding 3 ins. above the ground, with a 3 1/4 in. diam. brass cap mkd. as shown above. From which:

- A fir, 15 ins. diam., bears N63°E, 14.1 ft. (21 lks.) dist., mkd. with a healed face. (B.L.M.)  
A larch, 8 ins. diam., bears South, 60.9 ft. (92.3 lks.) dist., mkd. with a healed face. (B.L.M.)  
A fir, 17 ins. diam., bears S27°W, 27.5 ft. (41 lks.) dist., mkd. with visible scribe. (G.L.O.)  
A 22 in. stump bears N40°W, 10.2 ft. (15 lks.) dist., mkd. with visible scribe. (G.L.O.)

- III. Painted bearing trees and attached Land Survey Monument and Bearing Tree signs.

Magnetic Declination: 20° East.



SKETCH OF CORNER

## CERTIFICATION

I. Lisa Stamy  
certify the information shown herein is true and correct.

I. Alvah F. Hughes  
certify that this Corner Record correctly represents work performed by me or under my direction in compliance with the "Corner Recordation Act" (70-22-104, et seq., M.C.A.).

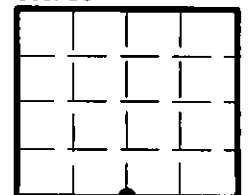
Alvah F. Hughes  
Signature of Surveyor & Seal

Date: 12/23/96

Reg. No.: 7322LS

Employer: U.S. FOREST SERVICE

Sec. 18



• - corner this sheet

Office of Clerk and Recorder, County of LINCOLN. This "corner record" was filed for record on FEB 3, 1997 and was noted on the cross-index plat and is assigned page No. 9199, in book No. CORAL M. CUMMINGS

County Official [Signature]

Cross Index No. N-3 T. 35N R. 26W P.M., MT

