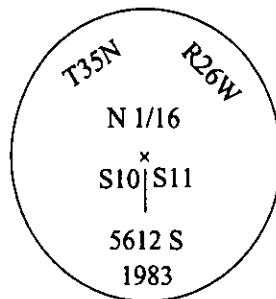


CERTIFIED CORNER RECORDATION

Corner N 1/16 Sec. 10 & 11 T. 35N R. 26W P.M., MT Lincoln County

- I. 1983 Certified Corner Recordation by Thomas C. Hill, Reg. No. 5612 S: On record at the Lincoln County Clerk and Recorder's office, on page no. 3040, filed on April 25, 1985.

At the corner position, corresponding to C. of S. 1230 and this survey, set an aluminum post, 30 ins. long, 2 1/2 ins. diam., 25 ins. in the ground, with an aluminum cap mkd. as shown:



Established two bearing trees:

- A pine, 9 ins. diam., bears S10°E, 19.9 ft. dist., scribed "1/16 BT".
- A pine, 13 ins. diam., bears N29°W, 26.3 ft. dist., scribed "S10 BT".

- II. Found a 2 1/2 in. diam. iron post, firmly set, protruding 2 ins. above the ground, with a 3 1/4 in. diam. alum. cap mkd. as shown above.

From which:

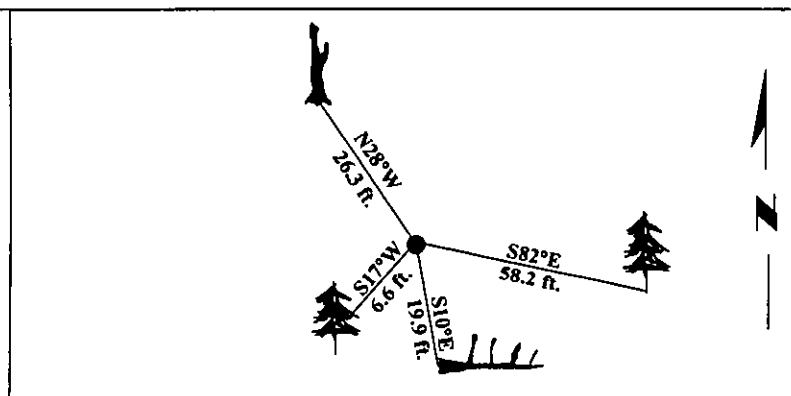
- A downed dead tree, 9 ins. diam., bears S10°E, 19.9 ft. dist., scribed "1/16 BT".
- A dead pine, 14 ins. diam., bears N29°W, 26.3 ft. dist., scribed "S10 BT".

- III. Established two new bearing trees:

- A fir, 14 ins. diam., bears S82°E, 58.2 ft. dist., scribed "N 1/16 S11 BT".
- A fir, 7 ins. diam., bears S17°W, 6.6 ft. dist., scribed "N 1/16 S10 BT".

Painted bearing trees and attached Land Survey Monument and Bearing Tree signs.

Magnetic Declination: 20° East.

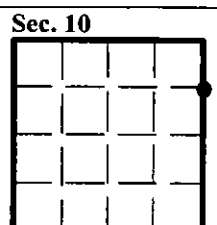


SKETCH OF CORNER

CERTIFICATION	
I. Mark Federman	certify the information shown herein is true and correct.
I. Alvah F. Hughes	certify that this Corner Record correctly represents work performed by me or under my direct supervision in compliance with the "Corner Recordation Act" (70-22-101, MCA).
Date:	12/28/96
Reg. No.:	7322LS
Employer:	U.S. FOREST SERVICE

Office of Clerk and Recorder, County of LINCOLN. This "corner record" was filed for record on FEB 3 1997 and was noted on the cross-index plat and is assigned page No. 9117, in book No. CORAL M. CUMMINGS

County Official



• - corner this sheet

