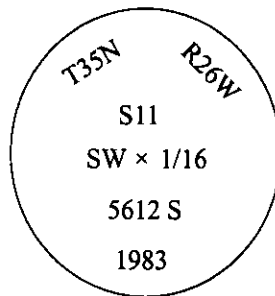


CERTIFIED CORNER RECORDATION

Corner SW 1/16 Sec. 11 T. 35N R. 26W P.M., MT Lincoln County

- I. 1983 Certified Corner Recordation by Thomas C. Hill, Reg. No. 5612 S: On record at the Lincoln County Clerk and Recorder's office, on page no. 3045, filed on April 25, 1985.

At calculated corner position, set an aluminum post, 30 ins. long, 2 1/2 ins. diam., 27 ins. in the ground, surrounded by stone collar, with an aluminum cap mkd. as shown:



Established two bearing trees:

- A pine, 15 ins. diam., bears N34°E, 27.7 ft. dist., scribed "SW 1/16 BT".
- A fir, 8 ins. diam., bears S82°E, 32.3 ft. dist., scribed "SW 1/16 BT".

Set a fiberglass post with "Survey Marker" decal, bears N84°E, 0.9 ft. dist. from monument.

- II. Found a 2 1/2 in. diam. iron post, firmly set, protruding 3 ins. above the ground, with a 3 1/4 in. diam. alum. cap mkd. as shown above.

From which:

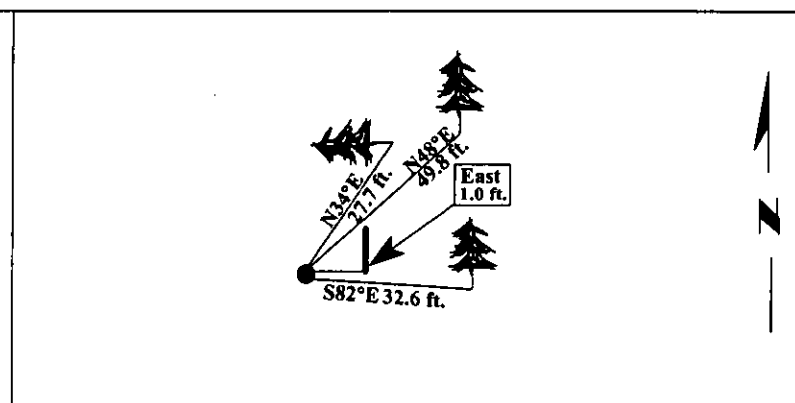
- A downed pine, bears N34°E, 27.7 ft. dist., mkd. "SW 1/16 BT".
- A fir, 10 ins. diam., bears S82°E, 32.6 ft. dist., mkd. with a healed face.
- A carsonite post with "Survey Marker" decal, bears East, 1.0 feet.

- III. Established one new Bearing Tree:

A larch, 17 ins. diam., bears N48°E, 49.8 ft. dist., scribed "SW 1/16 S11 BT".

Painted bearing trees and attached Land Survey Monument and Bearing Tree signs.

Magnetic Declination: 20° East.



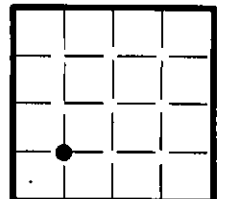
SKETCH OF CORNER

CERTIFICATION	
I. <u>Mark Federman</u>	certify the information shown herein is true and correct.
II. <u>Alvah F. Hughes</u>	certify that this Corner Record correctly represents work performed by me or, under my direction, in compliance with the "Corner Recordation Act" (70-22-101, et seq., M.C.A.)
Date: <u>12/28/96</u>	Signature of Surveyor & Seal
Reg. No.: <u>7322LS</u>	
Employer: <u>U.S. FOREST SERVICE</u>	

Office of Clerk and Recorder, County of LINCOLN. This "corner record" was filed for record on FEB 3, 1997 and was noted on the cross-index plat and is assigned page No. 9116, in book No. CORAL M. CUMMINGS

County Official

Sec. 11



• - corner this sheet



RECEIVED
JAN 10 1964
U.S. AIR FORCE
HONOLULU
HAWAII