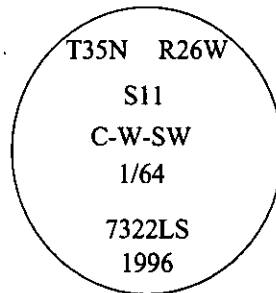


CERTIFIED CORNER RECORDATION

Corner C-W-SW 1/64 Sec. 11 T. 35N R. 26 W P.M., MT Lincoln County

- I. No previous history.
- II. No evidence found.
- III. At the position determined by survey, set a 30 in. long, 3/4 in. diam. alum. rod, 28 ins. in the ground, with a 3 1/4 in. diam. alum. cap mkd. as shown:



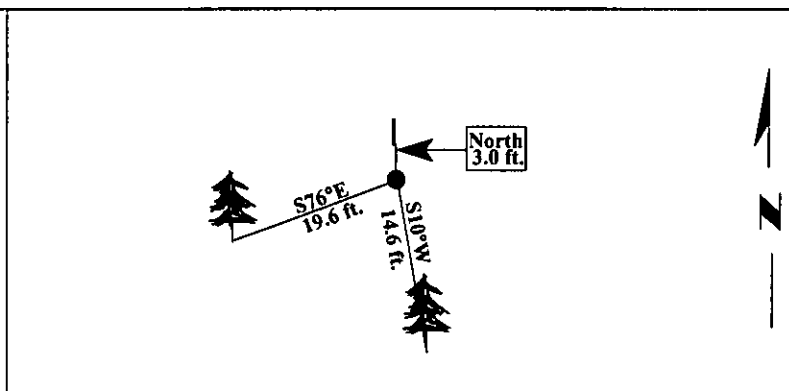
Established two bearing trees:

- A fir, 10 ins. diam., bears S76°E, 19.6 ft. dist., scribed "CWSW 1/64 S11 BT".
- A fir, 12 ins. diam., bears S10°W, 14.6 ft. dist., scribed "CWSW 1/64 S11 BT".

Painted bearing trees and attached Land Survey Monument and Bearing Tree signs.

Set a 6 ft. steel guard post with Land Survey Marker decal, North, 3.0 feet.

Magnetic Declination: 20° East.



SKETCH OF CORNER

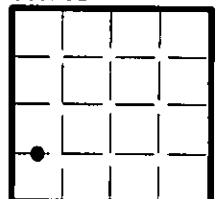
CERTIFICATION	
I. <u>Patricia Bundrock</u>	certify the information shown herein is true and correct.
I. <u>Alvah F. Hughes</u>	
certify that this Corner Record correctly represents work performed by me or under my direction in compliance with the "Corner Recordation Act" (70-22-101, et seq., M.C.A.)	
<u>Alvah F. Hughes</u>	
Signature of Surveyor & Seal	
Date: <u>12/28/96</u>	
Reg. No.: <u>7322LS</u>	
Employer: <u>U.S. FOREST SERVICE</u>	

Office of Clerk and Recorder, County of LINCOLN. This "corner record" was filed for record on FEB 3, 1997 and was noted on the cross-index plat and is assigned page No. 9115, in book No. _____

CORAL M. CUMMINGS

County Official

Sec. 11



• - corner this sheet

