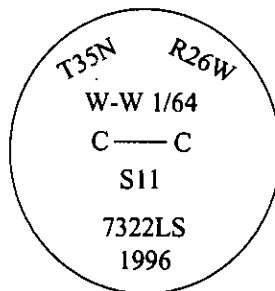


# CERTIFIED CORNER RECORDATION

Corner C-W-W 1/64 Sec. 11 T. 35N R. 26 W P.M., MT Lincoln County

- I. No previous history.
- II. No evidence found.
- III. At the position determined by survey, set a 30 in. long, 3/4 in. diam. alum. rod, 28 ins. in the ground, with a 3 1/4 in. diam. alum. cap mkd. as shown:



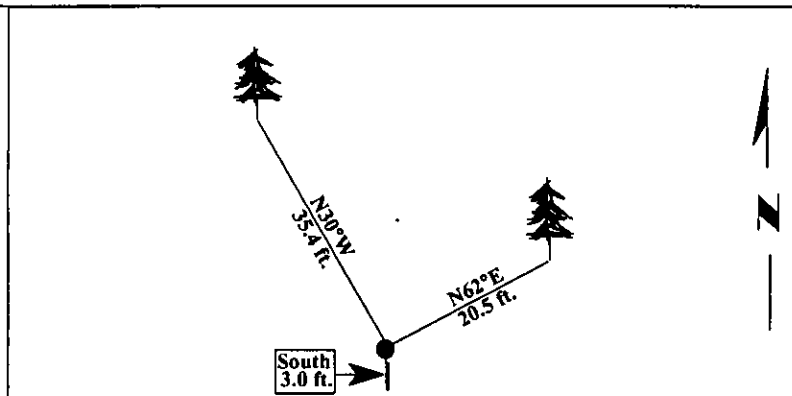
From which:

- A fir, 9 ins. diam., bears N62°E, 20.5 ft. dist., scribed "CWW 1/64 S11 BT".
- A larch, 15 ins. diam., bears N30°W, 35.4 ft. dist., scribed "CWW 1/64 S11 BT".

Painted bearing trees and attached Land Survey Monument and Bearing Tree signs.

Set a 6 ft. steel guard post with Land Survey Marker, South, 3.0 feet.

Magnetic Declination: 20° East.

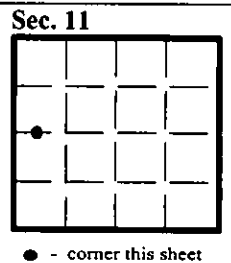


SKETCH OF CORNER

CERTIFICATION	
I, <u>Patricia Bundrock</u> certify the information shown herein is true and correct.	
I, <u>Alvah F. Hughes</u> certify that this Corner Record correctly represents work performed by me or under my direction in compliance with the "Corner Recordation Act" (70-22-101, et seq., M.C.A.)	
<u>Alvah F. Hughes</u> Signature of Surveyor & Seal	
Date: <u>12/28/96</u>	
Reg. No.: <u>7322LS</u>	
Employer: <u>U.S. FOREST SERVICE</u>	

Office of Clerk and Recorder, County of LINCOLN. This "corner record" was filed for record on FEB 3, 1997 and was noted on the cross-index plat and is assigned page No. 9114, in book No. CORAL M. CUMMINGS

County Official By JB



• - corner this sheet

