

CERTIFIED LAND CORNER RECORDATION
(REFERENCE FSM 7153.53)

DESCRIPTION OF CORNER EVIDENCE FOUND, AND ORIGINAL RECORD (IF KNOWN)

No previous record of corner monumentation on file.

DESCRIPTION OF MONUMENT AND ACCESSORIES ESTABLISHED
TO PERPETUATE THE ORIGINAL LOCATION OF THIS CORNER:

Date of work: 5/11/80

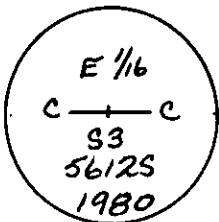
Set a 2 1/2" X 30" aluminum pipe, 26" in the ground, with a raised mound of stone around pipe. Cap marked as shown:

From which:

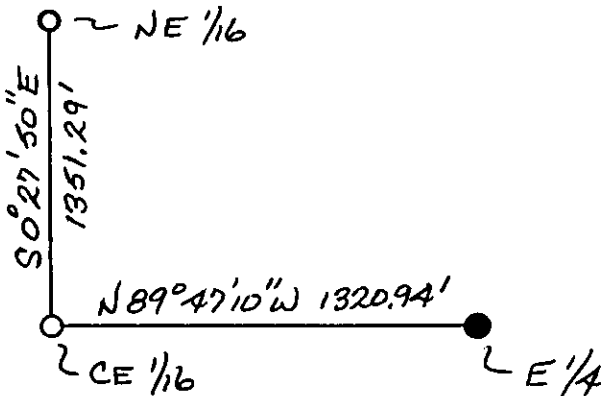
A douglas fir, 7" dia., bears N 29°W, 29.0 FT., marked: CE 1/16 S3 BT.

A douglas fir, 6" dia., bears S 43°E, 120.8 FT. marked: x BT.

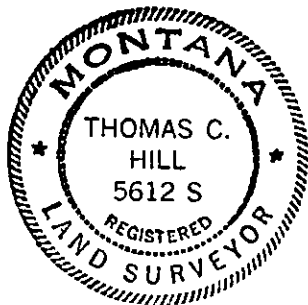
Location poster attached to a douglas fir, 15"., bears S 30°W, 4.2 FT.



SKETCH, WITH COURSE AND DISTANCE TO ADJACENT CORNERS IF DETERMINED IN THIS SURVEY.
(MAY SKETCH OR PASTE REPRODUCTION ON REVERSE SIDE.)



Surveyor's Seal



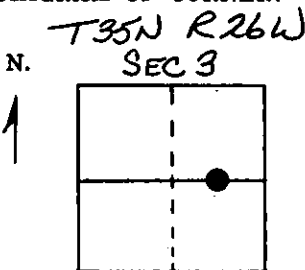
I, Anthony J. Bachman
certify that the information shown herein is true and correct.

Anthony J. Bachman
Signature of Ground Party Chief

I, Thomas C. Hill
certify that I have carefully performed or reviewed the work done on the diagrammed corner as reported on this recordation form and approve the same.

Thomas C. Hill
Signature of Surveyor

DIAGRAM OF CORNER:



● = Corner recorded on the sheet

5612 S
Registration Number

Office of Clerk and Recorder, County of Lincoln

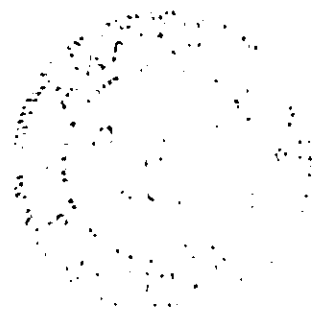
This "corner record" was filed for record on the 8th day of October, 1980, was noted on the cross-index plat and is

assigned page No. 902, in book No. _____

Blaine L. Vaughn, Jr.
County Official

Cross Index No. 16-C T. 35N R. 26W Mer.

THE UNITED STATES OF AMERICA
DEPARTMENT OF THE INTERIOR
BUREAU OF LAND MANAGEMENT
WASHINGTON, D. C. 20250



OFFICE OF THE DIRECTOR
BUREAU OF LAND MANAGEMENT
WASHINGTON, D. C. 20250