

CERTIFIED LAND CORNER RECORDATION  
(REFERENCE FSM 7153.53)

DESCRIPTION OF CORNER EVIDENCE FOUND, AND ORIGINAL RECORD (IF KNOWN)

No previous record of monumentation on file.

DESCRIPTION OF MONUMENT AND ACCESSORIES ESTABLISHED  
TO PERPETUATE THE ORIGINAL LOCATION OF THIS CORNER:

Date of work: 5/5/80

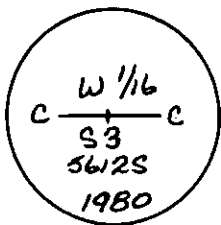
Set a 2 1/2" X 30" aluminum pipe 2 1/4" in the ground, with a raised mound of stone around the pipe. Cap marked as shown:

From which:

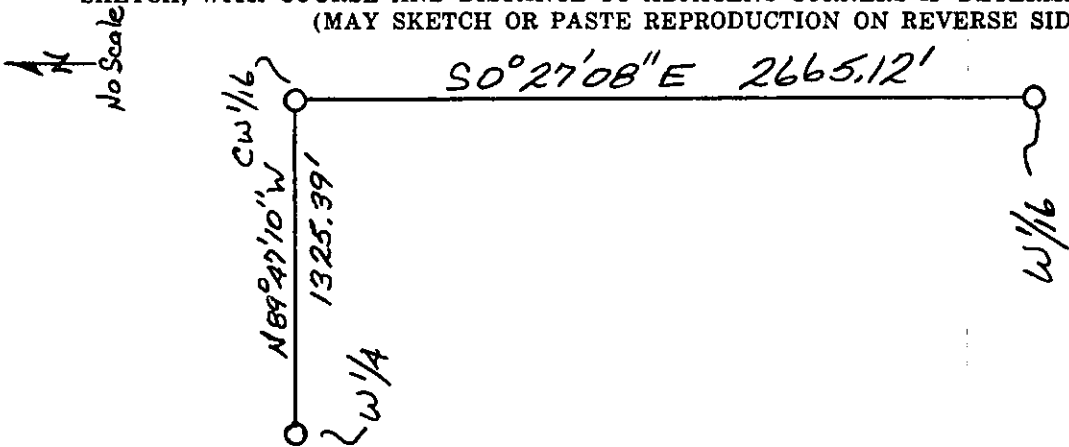
A larch, 7" dia., bears S72°E, 11.7 FT., marked CW 1/16 S3 BT.

A larch, 7" dia., bears N 09°E, 13.7 FT., marked x BT.

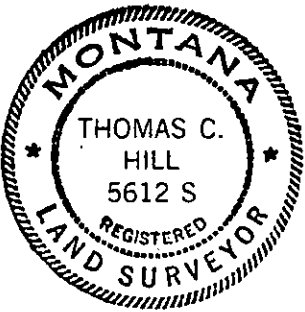
Location poster attached to a douglas fir, 1 1/4" dia., bears N54° W, 12.3 FT.



SKETCH, WITH COURSE AND DISTANCE TO ADJACENT CORNERS IF DETERMINED IN THIS SURVEY.  
(MAY SKETCH OR PASTE REPRODUCTION ON REVERSE SIDE.)



Surveyor's Seal



I, Anthony J. Bachman, certify that the information shown herein is true and correct.

Anthony J. Bachman  
Signature of Ground Party Chief

Thomas C. Hill

I, Thomas C. Hill, certify that I have carefully performed or reviewed the work done on the diagrammed corner as reported on this recordation form and approve the same.

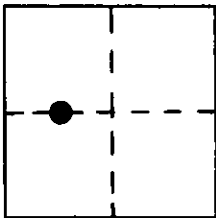
Thomas C. Hill  
Signature of Surveyor

DIAGRAM OF CORNER:

T35N R26W  
SEC 3

N.

1



● = Corner recorded on the sheet

5612-5  
Registration Number

Office of Clerk and Recorder, County of Lincoln

This "corner record" was filed for record on the 8th day of October, 1980, was noted on the cross-index plat and is assigned page No. 899, in book No.

Clarence L. Vaughan, Jr., Deputy  
County Official

Cross Index No. 14-C T. 35N R. 26W Mer.

