

CERTIFIED LAND CORNER RECORDATION

SEC. 14 TWP. 35 N., R. 26 W., P.M.M.

DESCRIPTION OF CORNER EVIDENCE FOUND, AND ORIGINAL RECORD (IF KNOWN)

Set a 5/8" rod with Yellow cap stamped JHN 4661 S
on line at mid point between SW Corner (a pin set by others)
and the SE Corner (a Brass Cap by BLM)

DESCRIPTION OF MONUMENT AND ACCESSORIES ESTABLISHED
TO PERPETUATE THE ORIGINAL LOCATION OF THIS CORNER:

Office

Date of work: June 1980

SEE REVERSE SIDE

SKETCH, WITH COURSE AND DISTANCE TO ADJACENT CORNERS IF DETERMINED IN THIS SURVEY.
(MAY SKETCH OR PASTE REPRODUCTION ON REVERSE SIDE.)

SEE DIAGRAM ON REVERSE SIDE

Surveyor's Seal

I, Jack H. Ninneman 4661 S
certify that the information shown herein is true and
correct.

Jack H. Ninneman
Signature of Ground Party Chief

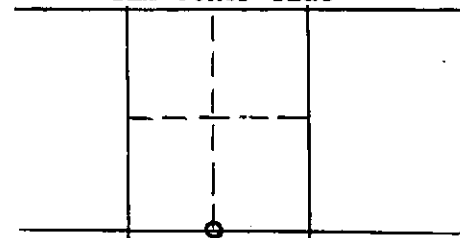
J. H. Ninneman
I, _____
certify that I have carefully performed or reviewed the
work done on the diagrammed corner as reported on this
recording form and approve the same.

J. H. Ninneman
Signature of Surveyor

DIAGRAM OF CORNER:

Sec. 14-35-26
N.

SEE Other side



○ = Corner recorded on the sheet

4661 S.

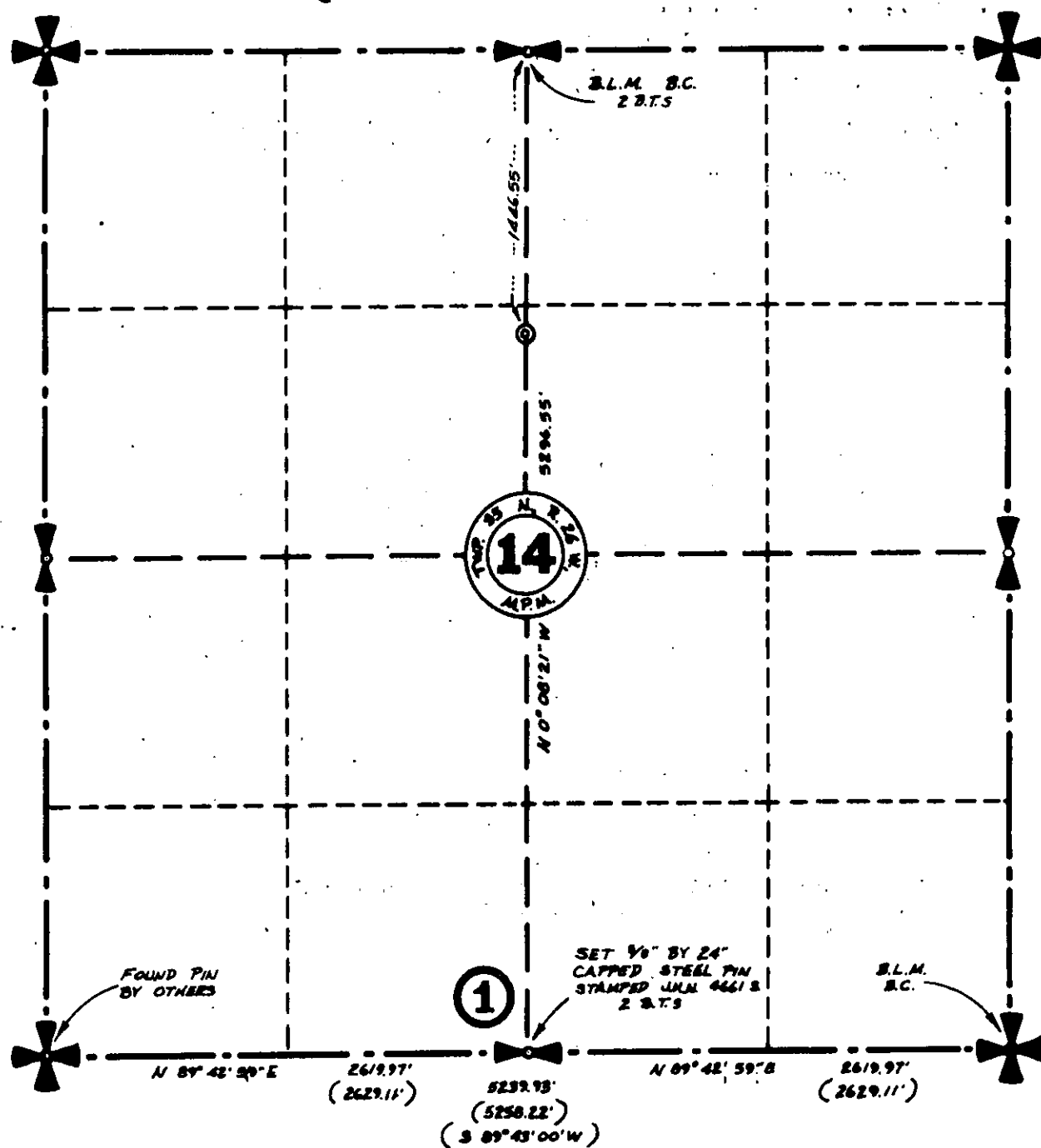
Registration Number

Office of Clerk and Recorder, County of Lincoln

This "corner record" was filed for record on the 31ST day of July 1980, was noted on the cross-index plat and is
assigned page No. 878, in book No. _____

Eleanor L. Vaughn by Sherry L. Hawke
County Official Deputy

Sec. 14 Twp. 35 N., R. 26 W., M.P.M. (89)



(1) Set 5/8"x 24" Steel Rod with Yellow Cap
stamped: J.H.N. 4661 S.

11" Larch Bears S30°E 10.0 Ft.
Scribed 1/4 S 23 BT & Posted.

10" Pine Bears S71°W 19.2 Ft.
Scribed 1/4 S 23 BT & Posted.

