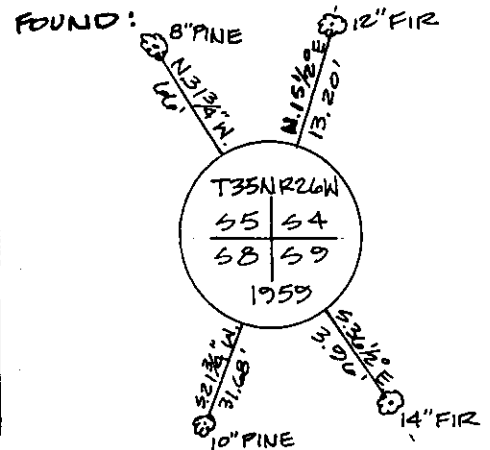


CERTIFIED LAND CORNER RECORDATION

DESCRIPTION OF CORNER EVIDENCE FOUND, AND ORIGINAL RECORD (IF KNOWN)

BLM RECORD :
 SET 2 1/2" I.P. - 26" IN GROUND
 BRASS CAP MARKED AS FOUND
 BURIED. O.C. ALONGSIDE I.P.
 BT-54-12" INCH FIR - N. 15 1/2° E. - 20 LKS - NEW BT
 BT-59-14" FIR - S. 36 1/2° E. - 6 LKS. - NEW BT
 BT-58-10" PINE - S. 21 3/4° W. - 48 LKS - NEW BT
 BT-55-8" PINE - N. 31 3/4° W. - 100 LKS. - NEW BT



DESCRIPTION OF MONUMENT AND ACCESSORIES ESTABLISHED TO PERPETUATE THE ORIGINAL LOCATION OF THIS CORNER:

NO FURTHER PERPETUATION

Date of work: 12-1979

SKETCH, WITH COURSE AND DISTANCE TO ADJACENT CORNERS IF DETERMINED IN THIS SURVEY.
 (MAY SKETCH OR PASTE REPRODUCTION ON REVERSE SIDE.)

Surveyor's Seal

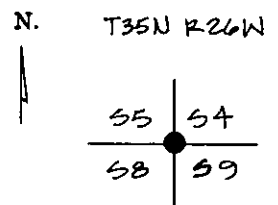
I, R. GORDON RILEY
 certify that the information shown herein is true and correct.

[Signature]
 Signature of Ground Party Chief

I, D. K. Marquardt
 certify that I have carefully performed or reviewed the work done on the diagrammed corner as reported on this recordation form and approve the same.

[Signature]
 Signature of Surveyor

DIAGRAM OF CORNER:



● = Corner recorded on the sheet

ES2989
 Registration Number

Office of Clerk and Recorder, County of Lincoln

his "corner record" was filed for record on the 4th day of March, 1980, was noted on the cross-index plat and is

assigned page No. 694, in book No. 1

Eleanor L. Vaughn, by Betty Bell
 County Official Deputy

