

INSTRUCTIONS

1. Original and/or subsequent record used to evaluate the corner position.
2. Description of evidence found, note discrepancies in the record, state method of establishing lost or obliterated corners.
3. Description of monument and accessories set to perpetuate the corner position.
4. Sketch of corner, show all pertinent data which can best be shown in a sketch example, corner marking, topography ties, position of accessories, etc.
5. Certification must be signed and sealed by Land Surveyor registered in the State of Montana.
6. Fill in Cross Index & Section Diagram at bottom of sheet.

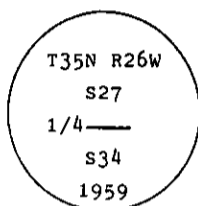
CERTIFIED CORNER RECORDATION

Corner S 1/4 of S27 T. 35 N. R. 26 W. P.M.M. Lincoln County

- I. 1894 G.L.O. original record by P. Sizer et al: Set a quartzite 18x18x8 ins. 12 ins. in the ground for 1/4 sec. cor. marked 1/4 on N face, from which
- A fir, 10 ins. diam., bears N67° E, 32 lks. (21.12 ft.) dist., mkd. 1/4 S BT.
 - A tamarack, 14 ins. diam., bears S42° 30' E, 47 lks. (31.02 ft.) dist., mkd. 1/4 S BT.

1959 BLM Remonumentation: The 1/4 sec. cor. of secs. 27 and 34, monumented with a quartzite stone, 20x12x8 ins., set and mkd. as described in the official record, and witnessed by the remains of the two original bearing trees.

At the corner point, set an iron post, 30 ins. long, 2 1/2 ins. diam., 26 ins. in the ground, in concrete, with brass cap mkd.



from which the remains of the original bearing trees:

A fir stump, 12 ins. diam., bears N67° E, 32 lks. (21.12 ft.) dist., visible marks BT. (Record)

A larch stump, 17 ins. diam., bears S42° 1/2' E, 47 lks. (31.02 ft.) dist., visible marks BT. (Record)

The new bearing trees:

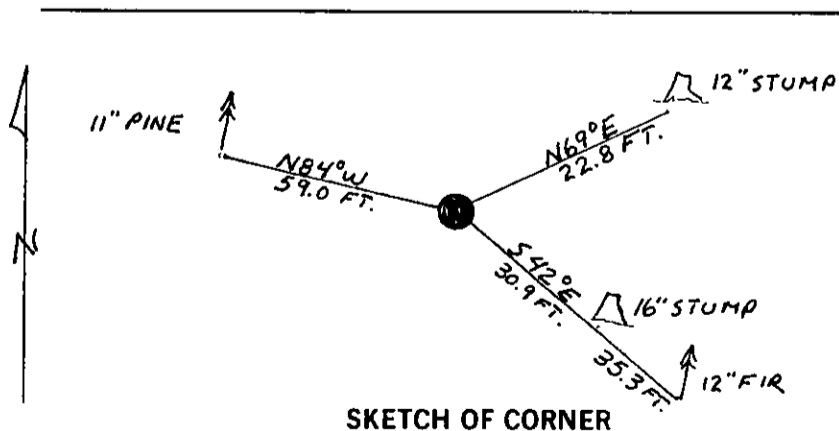
A fir, 6 ins. diam., bears S42° 1/2' E, 54 lks. (35.64 ft.) dist., mkd. T35N R26W 1/4 S34 BT.

A pine, 11 ins. diam., bears N85° 3/4' W, 90 lks. (59.40 ft.) dist., mkd. T35N R26W 1/4 S27 BT.

Bury the original stone alongside and raise a mound of stone, 2.5 ft. base, 1.5 ft. high, W of the iron post

- II. Found a 2 1/2 ins. diam. pipe, 4 ins. out of the ground, with BLM brass cap mkd. as shown, from which
- A stump, 12 ins. diam., bears N69° E, 22.8 ft. dist., BT visible. (Original)
 - A douglas fir, 12 ins. diam., bears S42° E, 35.3 ft. dist., overgrown blaze.
 - A stump, 16 ins. diam., bears S42° E, 30.9 ft. dist., BT visible. (Original)
 - A lodgepole pine, 11 ins. diam., bears N84° W, 59.0 ft. dist., overgrown blaze.

- III. Painted red bands around the bearing trees and attached Land Survey Monument and Bearing Tree signs.
Magnetic Declination: 20° East



SKETCH OF CORNER

CERTIFICATION

I, Kevin A. Todd
certify the information shown herein is true and correct.

Kevin A. Todd
Signature Ground Party Chief

I, Alvah F. Hughes
certify that this Corner Record correctly represents his work performed by me or under my direction in compliance with the "Corner Recordation Act" (70-22-101, et seq., M.C.A.)

Alvah F. Hughes
Signature of Surveyor & Seal

Date: 1/8/91 Reg. No. 7322

Employer: U.S. FOREST SERVICE

Office of Clerk and Recorder, County of Lincoln. This "corner record" was filed for record on 2-5-91

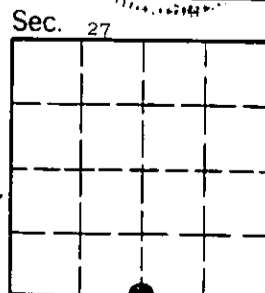
was noted on the cross-index plat and is assigned page No. 4520, in

book No. _____

Coral M. Cummings by Eric Buckhoff
County Official

V-15 35 N 26 W
Cross Index No. _____ T. _____ R. _____ P.M.M.

Adopted July 1, 1981, Montana Board of Professional Engineers & Land Surveyors



• - corner this sheet

