

INSTRUCTIONS

1. Original and/or subsequent record used to evaluate the corner position.
2. Description of evidence found, note discrepancies in the record, state method of establishing lost or obliterated corners.
3. Description of monument and accessories set to perpetuate the corner position.
4. Sketch of corner, show all pertinent data which can best be shown in a sketch example, corner marking, topography ties, position of accessories, etc.
5. Certification must be signed and sealed by Land Surveyor registered in the State of Montana.
6. Fill in Cross Index & Section Diagram at bottom of sheet.

CERTIFIED CORNER RECORDATION

Corner C $\frac{1}{4}$ Section 27 T. 35 N. R. 26 W. P.M.M. Lincoln County

RECORD:

A section breakdown by Sorenson (M.L.S. No. 2345-ES) in 1974 certificate of Survey Number 23.

Unrecorded Donald V. King Jr. (M.L.S. No. 5212-S) survey done in area.

FOUND:

A 2 $\frac{1}{4}$ inch diam. brass cap set per corner recordation No. 352 C of S No. 23, 3 inches above the ground marked as shown.

A 5/8 inch diam. rebar and P.V.C. cap stamped KING 5212-S purported to be C $\frac{1}{4}$ corner out of position.

MAINTENANCE:

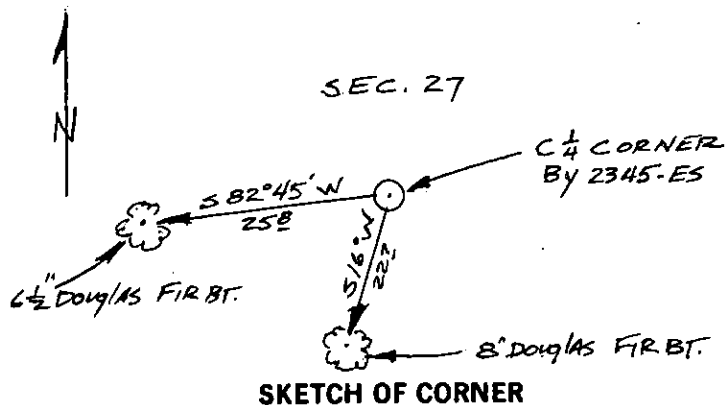
From the accepted position of the C $\frac{1}{4}$ corner by Sorenson 2345-ES we established two BT's described as follows:

A 6 $\frac{1}{2}$ inch diam. Douglas fir bears S.82°45'W., 25.8 feet scribed "C $\frac{1}{4}$ S 27 BT."

An 8 inch diam. Douglas fir bears S.16°W., 22.7 feet scribed "C $\frac{1}{4}$ S 27 BT."

Placed BT signs and painted the blazes red.

Painted a 6 inch band around the trees above the BT sign.



SKETCH OF CORNER

CERTIFICATION

1. JOHN DAWSON
certify the information shown is true and correct.

Signature of Ground Party Chief
KENNETH E. DAVIS

2. KENNETH E. DAVIS
certify that this Corner record correctly represents work performed by me or under my direction in accordance with the Corner Recordation Act" (70-230) as amended, M.C.A.

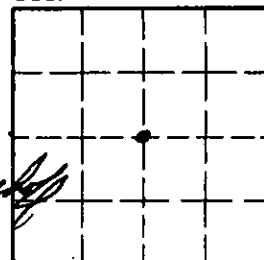
Signature of Surveyor
KENNETH E. DAVIS

Date: 1/22 Reg. No. 4475

Employer: DAVIS SURVEYING INC

Office of Clerk and Recorder, County of Lincoln. This "corner record" was filed for record on Jan 30, 1991 was noted on the cross-index plat and is assigned page No. 4420, in book No. Coral M Cummings by Bill Buckle County Official

Sec. 27



Cross Index No. _____ T. _____ R. _____ PMM

• - corner this sheet

