

INSTRUCTIONS

1. Original and subsequent record used to evaluate the corner position.
2. Description of evidence found, note discrepancies in the record, state method of establishing lost or obliterated corners.
3. Description of monument and accessories set to perpetuate the corner position.
4. Sketch of corner, show all pertinent data which can best be shown in a sketch example, corner marking, topography ties, position of accessories, etc.
5. Certification must be signed and sealed by Land Surveyor registered in the State of Montana.
6. Fill in Cross Index & Section Diagram at bottom of sheet.

CERTIFIED CORNER RECORDATION

Corner CS 1/16 Section 27 T. 35 N. R. 26 W. P.M.M. Lincoln County

RECORD:

A section breakdown by Sorenson (M.L.S. No. 2345-ES) in 1974.
Certificate of Survey Number 23.

FOUND:

A $2\frac{1}{4}$ inch diam. brass cap set per corner recordation No. 354 5 inches above the ground marked as shown.

MAINTENANCE:

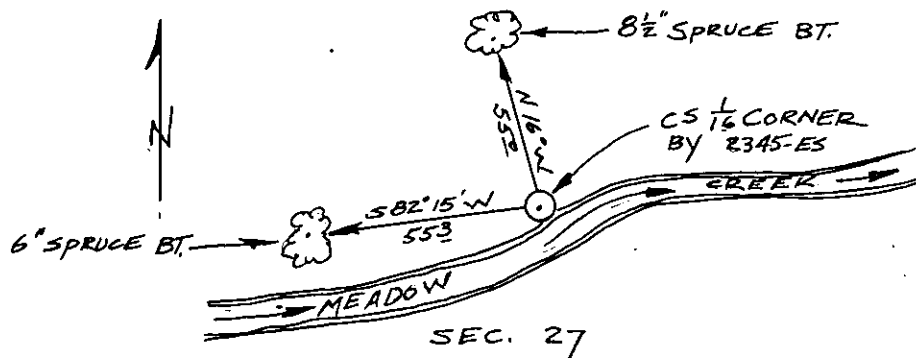
We established two BT's described as follows:

An $8\frac{1}{2}$ inch diam. Spruce bears N.16°W., 55 feet scribed "CS 1/16 S. 27 BT."

A 6 inch diam. Spruce bears S.82°15'W., 55.3 feet scribed "CS 1/16 S. 27 BT."

Placed BT signs and painted the blazes red.

Painted a 6 inch red band around the trees above the BT signs.



SKETCH OF CORNER

CERTIFICATION

I, JOHN DAMON
certify the information shown herein is true and correct.

John E. Damon
Signature Ground Party Chief

I, KEN E. DAVIS
certify that this Corner Record correctly represents work performed by me or under my direction in compliance with the "Corner Recordation Act" (M.C.A. 49-22-101 et seq.)

K. E. Davis
Signature of Surveyor & Seal

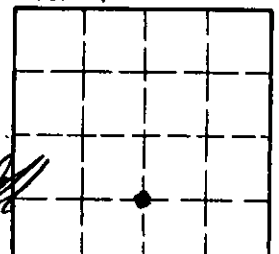
Date: 11-28-88 Reg. No. 49265

Employer: DAVIS Surveying, Inc.

Office of Clerk and Recorder, County of Lincoln. This "corner record" was filed for record on Jan 30, 1991 was noted on the cross-index plat and is assigned page No. 4419, in book No. _____

Coral M. Cummings by Bill Bull
County Official

Sec. 27



Cross Index No. _____ T. _____ R. _____ P.M.M.

• - corner this sheet

