

## INSTRUCTIONS

1. Original and subsequent record used to evaluate the corner position.
2. Description of evidence found, note discrepancies in the record, state method of establishing lost or obliterated corners.
3. Description of monument and accessories set to perpetuate the corner position.
4. Sketch of corner, show all pertinent data which can best be shown in a sketch example, corner marking, topography ties, position of accessories, etc.
5. Certification must be signed and sealed by Land Surveyor registered in the State of Montana.
6. Fill in Cross Index & Section Diagram at bottom of sheet.

## CERTIFIED CORNER RECORDATION

Corner Section 22 | 21  
28 | 27 T. 35 N. R. 26 W. P.M.M. Lincoln County

RECORD: 1894 Sizer survey

Set a post 4 feet long, 4 inched square, 24 inches in ground, from which.

A Tamarach 9 ins. diam bears N.16°30'E., 33 lks. (21.78 feet) dist. marked T. 35 N. R. 26 W. S 22 BT.

A fir 6 ins. diam. bears S.79°30'E., 56 lks. (36.96 feet) dist. marked T. 35 N. R. 26 W. S. 27 BT.

A Tamarack 10 ins. diam. bears S.69°30'W. 40 lks. (26.40 feet) dist. marked T. 35 N. R. 26 W.S. 28 BT.

A fir 6 ins. diam. bears N.30°W. 64 lks. (42.24 feet) dist. marked T. 35 N. R. 26 W. S. 21 BT.

## FOUND:

We found evidence of a well rotted 4 inch square post 6 to 7 inched below original ground.

A 10½ inch diam Tamarack snag fallen over bears N. 16°30'E., 21.78 feet dist. scribing visible and legible.

A 14 inch diam. Douglas fir stump bears S.77°E., 36.96 feet dist. scribing visible and legible.

A 12 inch diam. Tamarack stump bears S.72°W., 26.40 feet dist. scribing visible and legible.

A 16 inch diam. Douglas fir stump bears N.27°15'W., 42.24 feet dist. Evidence of old blaze visible but rotted and illegible.

A 2 inch diam. galvanized iron pipe with no cap set by Marquardt (M.L.S. No. 2989-ES) per corner recordation No. 1140 purported to be Section corner.

## MAINTENANCE:

Corner set by record distances from found original evidence at site.

Set a ¾ inch diam. aluminum cap on a 24 inch aluminum rod 4 inches above ground, cap marked as shown below.

We established four BT's described as follows:

A 7 inch diam Douglas fir bears N. 23°E., 32.1 feet scribed "T. 35 N. R. 26 W. S. 22 BT."

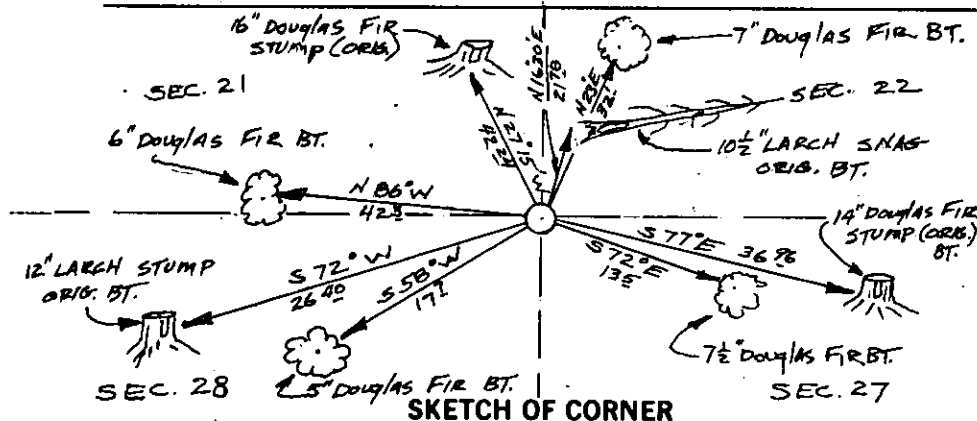
A 7½ inch diam. Douglas fir bears S.72°E., 13.5 feet scribed "T 35N, R. 26W. S. 27 BT."

A 5 inch diam. Douglas fir bears S.58°W., 17.7 feet scribed "T. 35N. R. 26 W. S. 28 BT."

A 6 inch diam. Douglas fir bears N.86°W., 42.3 feet scribed "T 35N. R 26W. S. 21 BT."

Place BT signs and painted blazes red.

Painted a 6 inch red band around the trees.



CERTIFICATION

JOHN DAMON  
 I certify that the information herein is true and correct.

JOHN DAMON  
 Signature of Party Chief

KENNETH DAVIS  
 I certify that this Corner Record represents work performed by me or under my direction in compliance with the "Corner Recordation Act" (M.C.A.)

KENNETH DAVIS  
 Signature of Surveyor & Seal

Date: Jan 30, 1991 No. 49755

Employer: DAVIS Surveying Inc

Office of Clerk and Recorder, County of Lincoln. This "corner record" was filed for record on Jan 30, 1991 was noted on the cross-index plat and is assigned page No. 4418, in book No. \_\_\_\_\_

Coral M Cummings by Paul C. Smith  
 County Official

Sec. 27


Cross Index No. \_\_\_\_\_ T. \_\_\_\_\_ R. \_\_\_\_\_ P.M.M.

• corner this sheet

