

INSTRUCTIONS

1. Original and/or subsequent record used to evaluate the corner position.
2. Description of evidence found, note discrepancies in the record, state method of establishing lost or obliterated corners.
3. Description of monument and accessories set to perpetuate the corner position.
4. Sketch of corner, show all pertinent data which can best be shown in a sketch example, corner marking, topography ties, position of accessories, etc.
5. Certification must be signed and sealed by Land Surveyor registered in the State of Montana.
6. Fill in Cross Index & Section Diagram at bottom of sheet.

CERTIFIED CORNER RECORDATION

Corner $\frac{1}{4}$ Section 27-26 T. 35 N. R. 26 W. P.M.M. Lincoln County

RECORD: 1894 Sizer survey

Set a post 3 ft. long, 3 ins. square, 24 ins. in the ground for $\frac{1}{4}$ Sec. Cor., marked $\frac{1}{4}$ S. on W. face from which;

A Tamarack 30 ins. diam. bears N.39°W., 6 lks. (3.96 ft.) dist. marked $\frac{1}{4}$ S. BT.

A fir 32 ins. diam bears N.41°30'E., 44 lks. (29.04 ft.) dist. marked $\frac{1}{4}$ S. BT.

1959 Cunningham remonumentation survey.

The $\frac{1}{4}$ sec. cor. of secs. 26 and 27, determined from the remains of the two original bearing trees. The remains of the original wooden post was found lying on the ground, faintly mkd. $\frac{1}{4}$ on one face.

At the corner point

Set an iron post, 30 ins. long, $2\frac{1}{4}$ ins. diam., 26 ins in the ground, in concrete, with brass cap from which

A fir, 10 ins. diam., bears S. 17 $\frac{1}{2}$ °E., 60 lks. dist., mkd. $\frac{1}{4}$ S 26 BT.

A fir, 9 ins. diam., bears S. 21 $\frac{1}{4}$ °W., 46 lks. dist., mkd. $\frac{1}{4}$ S 27 BT.

FOUND:

There was no search done during survey for original BT's by Sizer survey.

A 3 $\frac{1}{2}$ inch diam. brass cap by B.L.M. 1959 marked as shown set firmly in ground with stone mound around it.

A 12 inch diam. Douglas fir bears S.71°W., 29.9 feet with overgrown blaze. No visible scribing.

A 15 $\frac{1}{2}$ inch diam. Douglas fir bears S.17°30'E., 39.8 feet with overgrown blaze. No visible scribing.

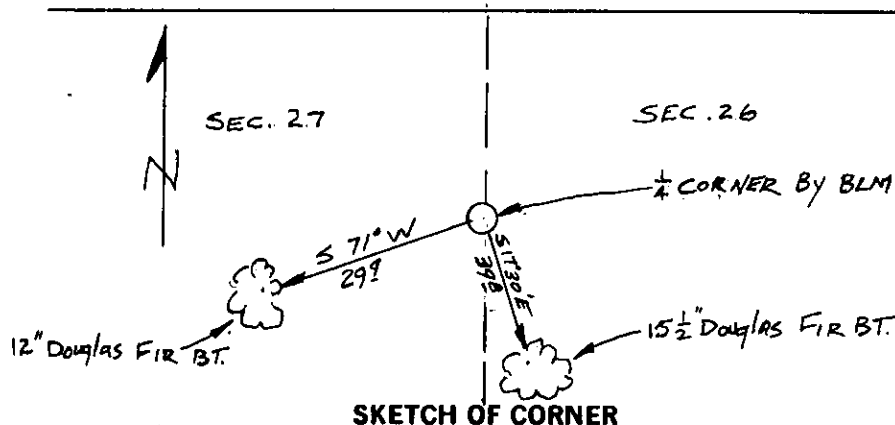
MAINTENANCE:

Place BT and Land Survey Monument signs.

Painted the overgrown blazes red.

Painted a 6 inch band around the trees above the BT sign.

Set a 6 foot steel post 2 feet in the ground 2 feet East of corner and attached Land Survey Monument sticker to it.



CERTIFICATION

1. JOHN DAMON
certify the information shown herein is true and correct.

Signature of Ground Party Chief

2. JOHN E. LEVINS
certify that this Corner Record correctly represents work performed by me or under my direction in compliance with the "Corner Recordation Act" (70-22-01 or seq., M.C.A.)

Signature of Surveyor & Seal

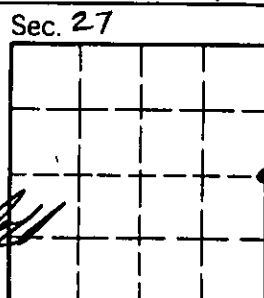
Date: Jan 30, 1991 Reg. No. 29755

Employer: DAVIS SURVEYING INC

Office of Clerk and Recorder, County of Lincoln. This "corner record" was filed for record on Jan 30, 1991

was noted on the cross-index plat and is assigned page No. 4417, in book No. _____

Chas M Cummings by Dea Buckell
County Official



Cross Index No. _____ T. _____ R. _____ P.M.M.

• - corner this sheet

