

## INSTRUCTIONS

1. Original and subsequent record used to evaluate the corner position.
2. Description of evidence found, note discrepancies in the record, state method of establishing lost or obliterated corners.
3. Description of monument and accessories set to perpetuate the corner position.
4. Sketch of corner, show all pertinent data which can best be shown in a sketch example, corner marking, topography ties, position of accessories, etc.
5. Certification must be signed and sealed by Land Surveyor registered in the State of Montana.
6. Fill in Cross Index & Section Diagram at bottom of sheet.

## CERTIFIED CORNER RECORDATION

Corner S.E. 1/16 Section 27 T. 35 N. R. 26 W. P.M.M. Lincoln County

RECORD:

Unrecorded Donald V. King Jr. (M.L.S. No. 5212-S) survey done in area.

FOUND:

A 5/8 inch diam. rebar and P.V.C. cap stamped: KING 5212-S purported to be S.E. 1/16 corner out of position.

MAINTENANCE:

Set a 5/8 inch diam., 24 inch long rebar with yellow P.V.C. cap stamped: KED 4975-S for S.E. 1/16 corner.

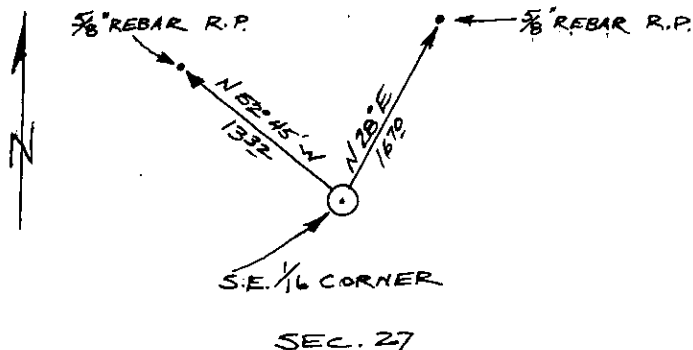
We established two reference points described as follows:

A 5/8 inch diam. rebar 24 inches long 2 inches above the ground bears N.28°E., 16.70 feet.

A 5/8 inch diam. rebar 24 inches long 2 inches above the ground bears N.52°45'W., 13.32 feet.

Attached BT signs on 4 foot steel posts behind reference points.

K.E.D.  
4975-S



SKETCH OF CORNER

CERTIFICATION

I, JOHN DAMON  
certify the information shown herein is true and correct.

JOHN DAMON  
Signature Ground Party Chief

I, KENNETH E. DAVIS  
certify that this Corner Record correctly represents work performed by me or under my direction in compliance with the "Corner Recordation Act" (40-29-201 et seq. M.C.A.)

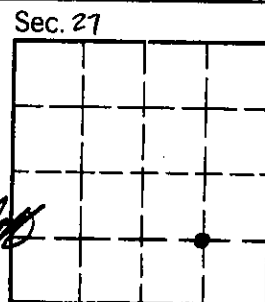
KENNETH E. DAVIS  
Signature of Surveyor & Seal

Date: Jan 30, 1991

Employer: \_\_\_\_\_

Office of Clerk and Recorder, County of Lincoln. This "corner record" was filed for record on Jan 30, 1991 was noted on the cross-index plat and is assigned page No. 4414, in book No. \_\_\_\_\_

David M. Cummings by Bill Daulton  
County Official



Cross Index No. \_\_\_\_\_ T. \_\_\_\_\_ R. \_\_\_\_\_ PMM

• corner this sheet

