

CERTIFIED LAND CORNER RECORDATION

(REFERENCE FSH 5681.65)

DESCRIPTION OF CORNER EVIDENCE FOUND, AND ORIGINAL RECORD (IF KNOWN)

1/4 CORNER COMMON TO SECTION 9 & 16, T.35 N., R.26W., P.M.M.,
LINCOLN COUNTY, MONTANA

FOUND NO EVIDENCE OF CORNER OR BEARING TREES;

THE ORIGINAL CORNER WAS WOOD POST 3' LONG, 3" SQUARE, 24" IN THE GROUND.

LAND DENSE BRUSH AND SWAMPS.

**DESCRIPTION OF MONUMENT AND ACCESSORIES ESTABLISHED
TO PERPETUATE THE ORIGINAL LOCATION OF THIS CORNER:**

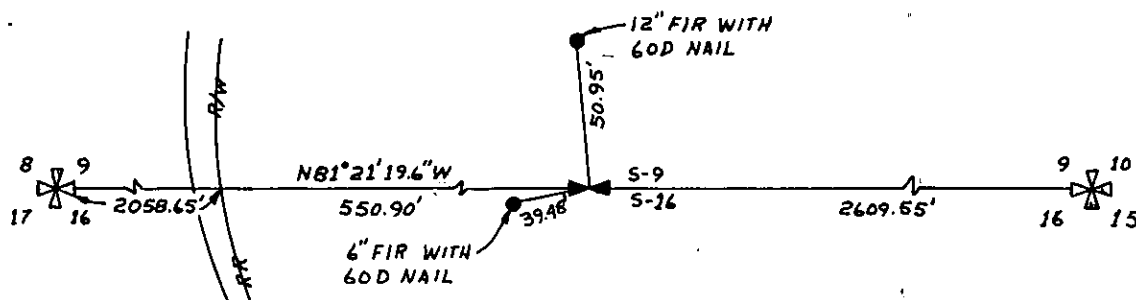
SET BRASS CAP MARKED 1/4, S. 9 & S 16
T.35N., R.26W., 2795-S., 9/73

Date of work: SEPT. 12, 1973

WITH BEARING TREES;

A FIR, 12" DIAM., BEARS NORTH, 50.95' MARKED WITH 60-D NAIL
A FIR, 6" DIAM., BEARS WEST, 39.48' MARKED WITH 60-D NAIL

SET BY SINGLE PROPORTION BETWEEN SECTION CORNERS 9, 10, 15 & 16 AND
8, 9, 16 AND 17.

**SKETCH, WITH COURSE AND DISTANCE TO ADJACENT CORNERS IF DETERMINED IN THIS SURVEY.
(MAY SKETCH OR PASTE REPRODUCTION ON REVERSE SIDE.)**

Surveyor's Seal

I, ROBERT E. HAHN
certify that the information shown herein is true and
correct.

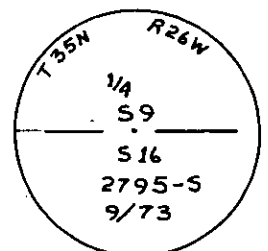
Robert E. Hahn
Signature of Ground Party Chief

I, JAMES L. HAHN
certify that I have carefully performed or reviewed the
work done on the diagrammed corner as reported on this
recordation form and approve the same.

James L. Hahn
Signature of Surveyor

DIAGRAM OF CORNER:

N.



☛ = Corner recorded on the sheet

2795 S
Registration Number

Office of Clerk and Recorder, County of Lincoln

This "corner record" was filed for record on the 7th day of August 1974, was noted on the cross-index plat and is
assigned page No. 371, in book No. 1

Eleanor L. Vaughn MacWatson, Deputy
County Official

Cross Index No. J 11 T. 35 R. 26 Mer.

