

CERTIFIED LAND CORNER RECORDATION

DESCRIPTION OF CORNER EVIDENCE FOUND, AND ORIGINAL RECORD (IF KNOWN)
1/4 CORNER COMMON TO SECTION 9 & 10, T.35N., R.26W., P.M.M.
LINCOLN COUNTY, MONTANA

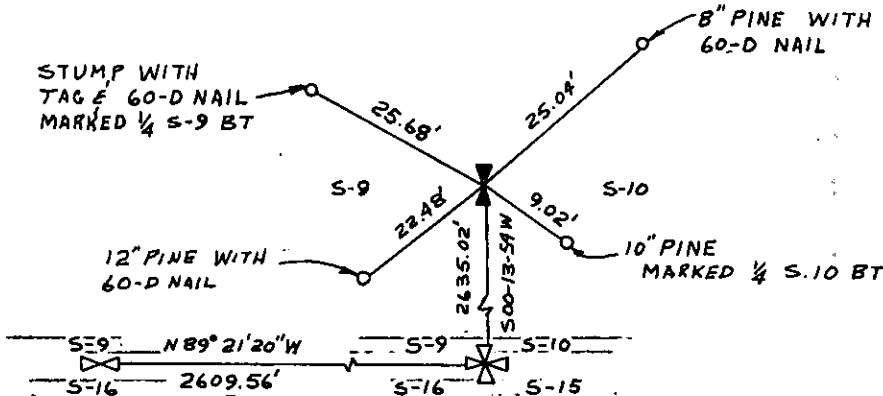
FOUND BRASS CAP WITH BEARING TREES.
THE ORIGINAL RECORD. THE 1/4 SECTION CORNER OF SECTIONS 9 & 10 DETERMINED FROM THE REMAINS OF THE TWO ORIGINAL BEARING TREES.
AT THE CORNER POINT;
SET AN IRON POST 30" LONG, 2 1/2" DIAM., 28" IN THE GROUND, IN CONCRETE, WITH BRASS CAP 1/4 SECTION 9. SECTION 10 FROM WHICH,
THE REMAINS OF THE ORIGINAL BEARING TREES:
A LARCH STUMP, 24" DIAM., BEARS N.58° E., 7 LINKS DISTANCE VISIBLE MARK BT (RECORD)
A LARCH STUMP, 28" DIAM., BEARS N.48° W., 41 LINKS DISTANCE VISIBLE MARKS BT (RECORD N.48° W. 51 LINKS)
THE NEW BEARING TREES;

DESCRIPTION OF MONUMENT AND ACCESSORIES ESTABLISHED
TO PERPETUATE THE ORIGINAL LOCATION OF THIS CORNER:

A PINE, 6" DIAM., BEARS S.30 1/4° E., 14 LINKS DISTANCE Date of work: JULY 27, 1973
MARKED 1/4 S.10 BT
A PINE, 7" DIAM., BEARS S.82 1/2 W., 35 LINKS DISTANCE, MARKED
1/4 S. 9 BT

THE MONUMENT AND BEARING TREES WERE NOT CHANGED.

SKETCH, WITH COURSE AND DISTANCE TO ADJACENT CORNERS IF DETERMINED IN THIS SURVEY.
(MAY SKETCH OR PASTE REPRODUCTION ON REVERSE SIDE.)



Surveyor's Seal

I, ROBERT E. HAHN
certify that the information shown herein is true and correct.

Robert E. Hahn
Signature of Ground Party Chief

I, JAMES L. HAHN
certify that I have carefully performed or reviewed the work done on the diagrammed corner as reported on this recordation form and approve the same.

James L. Hahn
Signature of Surveyor

DIAGRAM OF CORNER:

N.

S-9 1/4 S-10
1960

T35N R26W

✕ = Corner recorded on the sheet

2795 S
Registration Number

Office of Clerk and Recorder, County of Lincoln

This "corner record" was filed for record on the 7th day of August 1974, was noted on the cross-index plat and is

assigned page No. 364, in book No. 1 Eleanor L. Chappin, Maculation, Deputy
County Official

