

# CERTIFIED LAND CORNER RECORDATION

DESCRIPTION OF CORNER EVIDENCE FOUND, AND ORIGINAL RECORD (IF KNOWN)

CORNER COMMON TO SECTION 3, 4, 9, & 10, T.35N., R.26W., P.M.M.  
LINCOLN, COUNTY, MONTANA

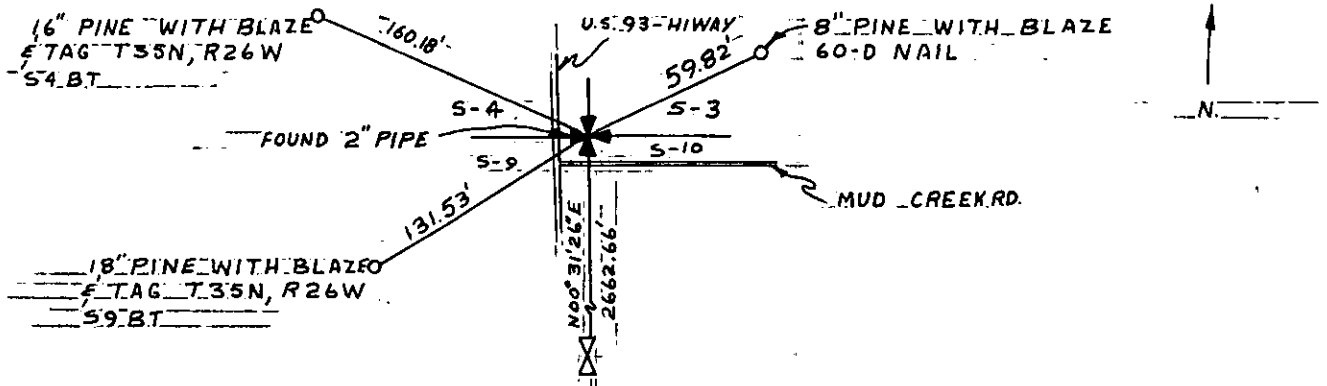
FOUND 2" IRON PIPE WITH OUT BRASS CAP AND BEARING TREES;  
RECORD-IRON POST 30" LONG, 2 1/2" DIAM., 28" IN THE GROUND, IN CONCRETE,  
WITH BRASS CAP MARKED S. 4, S. 3, S. 9, S. 10.  
THE NEW BEARING TREES;  
A PINE, 6" DIAM., BEARS N. 56 3/4° E., 91 LINKS DISTANCE, MARKED T.35N,  
R.26W., S. 3 BT  
A PINE, 14" DIAM., BEARS S. 84 3/4° W., 201 LINKS DISTANCE MARKED T.35N.,  
R.26W., S. 9 BT  
A PINE, 14" DIAM., BEARS N. 69 1/4° W., 244 LINKS DISTANCE MARKED T.35N,  
R.26W., S. 4 BT

DESCRIPTION OF MONUMENT AND ACCESSORIES ESTABLISHED  
TO PERPETUATE THE ORIGINAL LOCATION OF THIS CORNER:

Date of work: JULY 27, 1973

THE MONUMENT AND BEARING TREES WERE NOT CHANGED.

SKETCH, WITH COURSE AND DISTANCE TO ADJACENT CORNERS IF DETERMINED IN THIS SURVEY.  
(MAY SKETCH OR PASTE REPRODUCTION ON REVERSE SIDE.)



Surveyor's Seal

I, ROBERT E. HAHN  
certify that the information shown herein is true and  
correct.

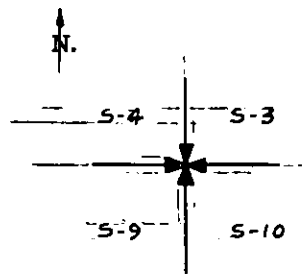
Robert E. Hahn

Signature of Ground Party Chief

I, JAMES L. HAHN  
certify that I have carefully performed or reviewed the  
work done on the diagrammed corner as reported on this  
recording form and approve the same.

James L. Hahn  
Signature of Surveyor

DIAGRAM OF CORNER:



Corner recorded on the sheet

2795 S  
Registration Number

Office of Clerk and Recorder, County of Lincoln

This "corner record" was filed for record on the 7th day of August 19 74, was noted on the cross-index plat and is  
assigned page No. 363, in book No. 1 Eleanor L. Vaughn, Mae Whitson Deputy  
County Official

