

CERTIFIED LAND CORNER RECORDATION

DESCRIPTION OF CORNER EVIDENCE FOUND, AND ORIGINAL RECORD (IF KNOWN)

At the C-S 1/16th corner Section 27 T.35 N., R.26 W., Principal Meridian, Montana.

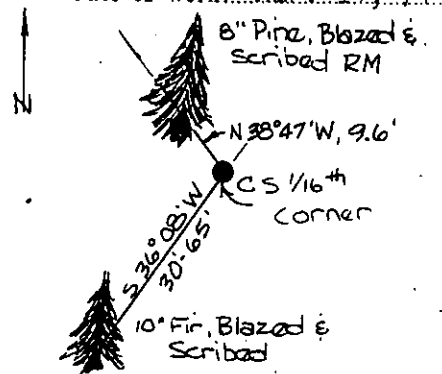
Record: No known record.

DESCRIPTION OF MONUMENT AND ACCESSORIES ESTABLISHED TO PERPETUATE THE ORIGINAL LOCATION OF THIS CORNER:

At the exact corner position which is the westerly edge of an overflow channel of Meadow Creek I set a 2" Iron Pipe 27" in the ground from which:

An 8" Pine bears N38°47'W, 9.6 Ft. blazed & scribed RM.
A 10" Fir bears S36°08'W, 30-65 ft. blazed & scribed RM.

Date of work: Mar. 14, 74



SKETCH, WITH COURSE AND DISTANCE TO ADJACENT CORNERS IF DETERMINED IN THIS SURVEY. (MAY SKETCH OR PASTE REPRODUCTION ON REVERSE SIDE.)

See Certificate of Survey No. 18, Lincoln County Courthouse, Libby, Montana.

Surveyor's Seal



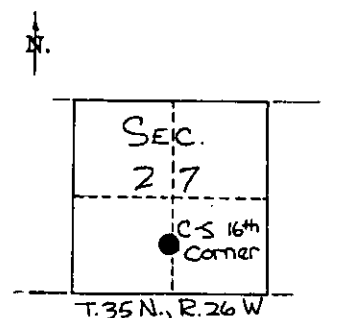
I, James R. Weatherly, certify that the information shown herein is true and correct.

[Signature]
Signature of Ground Party Chief

I, Gordon E. Sorenson, certify that I have carefully performed or reviewed the work done on the diagrammed corner as reported on this recordation form and approve the same.

[Signature]
Signature of Surveyor

DIAGRAM OF CORNER:



● = Corner recorded on the sheet

2345ES
Registration Number

Office of Clerk and Recorder, County of LINCOLN

This "corner record" was filed for record on the 2nd day of April, 1974, was noted on the cross-index plat and is assigned page No. 354, in book No. 1

Eleanor P. Vaughn, Mae Watson
County Official

Handwritten signature

March

25

1

1891

Received of the Treasurer of the
Board of Directors of the
City of New York
the sum of \$100.00
for the year 1891