

CERTIFIED LAND CORNER RECORDATION

DESCRIPTION OF CORNER EVIDENCE FOUND, AND ORIGINAL RECORD (IF KNOWN)

At the $\frac{1}{4}$ corner common to Sections 22 & 27, T35N., R.26 W., Principal Meridian, Montana.

Record: Set a post 3 ft. long and 3" square 24" in ground and marked $\frac{1}{4}$ on North face from which:

A pine. 12" in diameter bears S52°30'W, 33 links

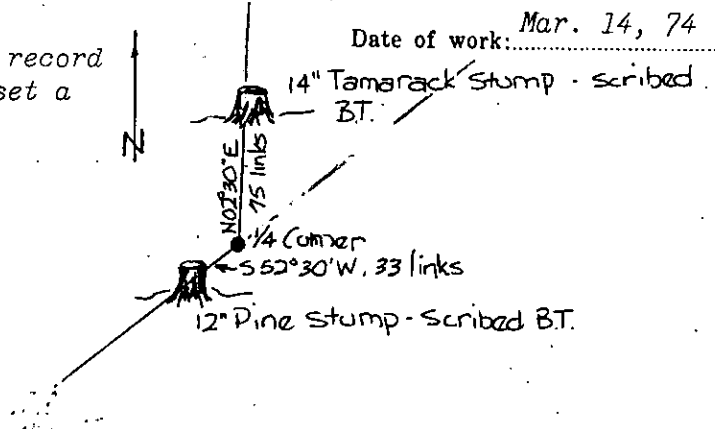
A tamarack 14" in diameter bears N02°30'E, 75 links

Found: No evidence of original post found; I found a 24" tamarack stump and a 20" pine stump both with visible BT scribe.

DESCRIPTION OF MONUMENT AND ACCESSORIES ESTABLISHED TO PERPETUATE THE ORIGINAL LOCATION OF THIS CORNER:

I relocated the original corner by using the record distance and at the exact corner location I set a 2" Iron pipe with brass cap.

No new accessories established.



SKETCH, WITH COURSE AND DISTANCE TO ADJACENT CORNERS IF DETERMINED IN THIS SURVEY. (MAY SKETCH OR PASTE REPRODUCTION ON REVERSE SIDE.)

See Certificate of Survey No. 18 Lincoln County Courthouse Libby, Montana.

Surveyor's Seal



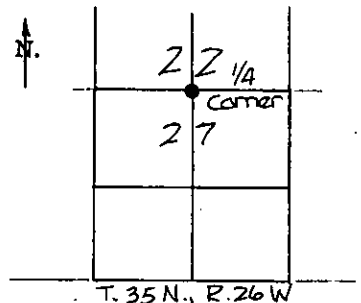
I, James R. Weatherly certify that the information shown herein is true and correct.

Signature of Ground Party Chief

I, Gordon E. Sorenson certify that I have carefully performed or reviewed the work done on the diagrammed corner as reported on this recordation form and approve the same.

Signature of Surveyor

DIAGRAM OF CORNER:




• = Corner recorded on the sheet

2335ES
Registration Number

Office of Clerk and Recorder, County of Lincoln

This "corner record" was filed for record on the 22nd day of April 19 74, was noted on the cross-index plat and is assigned page No. 353, in book No. 1 Charles L. Daugherty, By: Mae Watson, Deputy County Official



[Handwritten signature]