

CERTIFIED LAND CORNER RECORDATION

DESCRIPTION OF CORNER EVIDENCE FOUND, AND ORIGINAL RECORD (IF KNOWN)

At the SW 1/16th corner Section 27, T.35 N., R.26 W., Principal Meridian, Montana.

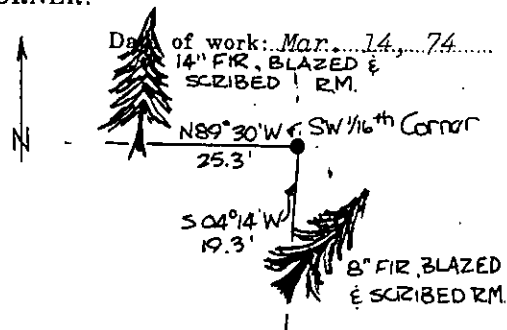
Record: No known record.

DESCRIPTION OF MONUMENT AND ACCESSORIES ESTABLISHED TO PERPETUATE THE ORIGINAL LOCATION OF THIS CORNER:

At the exact corner position I set a 2" Iron Pipe with brass cap 29" in the ground from which:

A 14" fir bears N89°30'00"W, 25.3 ft. blazed & scribed RM

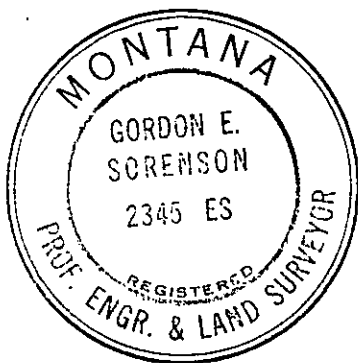
A 8" fir bears S04°14'W, 19.3 ft. blazed & scribed RM



SKETCH, WITH COURSE AND DISTANCE TO ADJACENT CORNERS IF DETERMINED IN THIS SURVEY. (MAY SKETCH OR PASTE REPRODUCTION ON REVERSE SIDE.)

See Certificate of Survey No. 18 Lincoln County Courthouse, Libby, Montana.

Surveyor's Seal



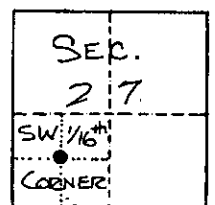
I, James R. Weatherly, certify that the information shown herein is true and correct.

Signature of Ground Party Chief

I, Gordon E. Sorenson, certify that I have carefully performed or reviewed the work done on the diagrammed corner as reported on this recordation form and approve the same.

Signature of Surveyor

DIAGRAM OF CORNER:



• = Corner recorded on the sheet

2345ES
Registration Number

Office of Clerk and Recorder, County of Lincoln

This "corner record" was filed for record on the 22nd day of April, 1974, was noted on the cross-index plat and is assigned page No. 351, in book No. 1. Eleanor L. Vaughn, By: Mae Watson, Deputy
County Official

[Faint, illegible handwriting]

[Faint, illegible handwriting]

[Faint, illegible handwriting]

[Faint, illegible handwriting]

[Faint, illegible handwriting]