

INSTRUCTIONS

1. Original and/or subsequent record used to evaluate the corner position.
2. Description of evidence found, note discrepancies in the record, state method of establishing lost or obliterated corners.
3. Description of monument and accessories set to perpetuate the corner position.
4. Sketch or corner, show all pertinent data which can best be shown in a sketch example, corner marking, topography lies, position of accessories, etc.
5. Certification must be signed and sealed by Registered Land Surveyor in State of Montana.
6. Fill in Cross Index & Section Diagram at bottom of sheet.

CERTIFIED CORNER RECORDATION

Corner WC 1/4 | S6 T. 35N R. 26W P.M.M. Lincoln County

RECORD: NO previous record of corner monumentation on file.

FOUND: Nothing to show evidence of a previously monumented corner.

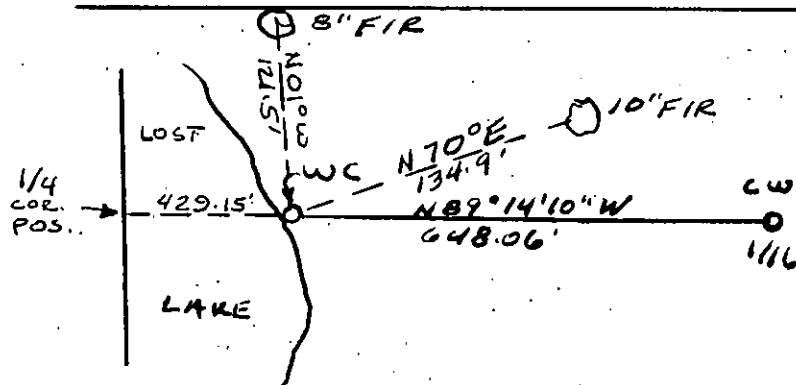
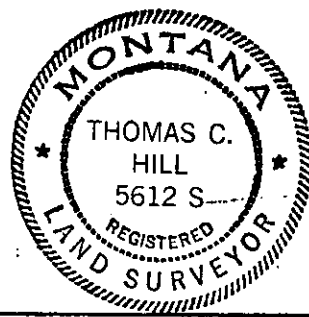
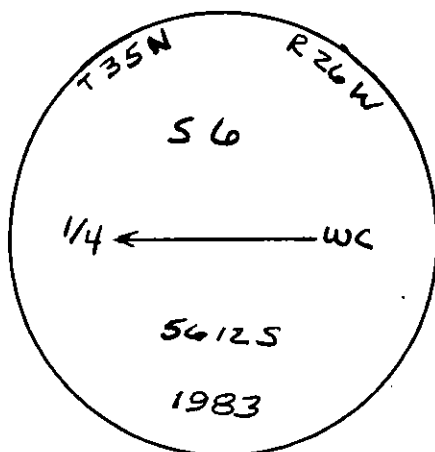
Set: A 30" aluminum pipe, approx 29" in the ground, with a 3 1/4" diam. aluminum cap surrounded by a stone collar and marked as shown.

from which

A fir 10" diam., bears N.70°E. 134.9 feet dist., scribed "WC BT".

A fir 8" diam., bears N.01°W., 121.5 feet dist., scribed "WC BT".

Note: The 1/4 corner between S1 and S6 falls in Lost Lake, therefore in order to mark the property boundary a WC was set.



SKETCH OF CORNER

CERTIFICATION

I, James W. Reed

certify the information shown herein is true and correct.

James W. Reed
Signature Ground Party Chief

I, Thomas C. Hill

certify that this Corner Record correctly represents work performed by me or under my direction in compliance with the "Corner Recordation Act" (78-22-101, et seq., M.D.A.)

Thomas C. Hill
Signature of Surveyor & Seal

Date: 3/15/83 Reg. No. 5612 S

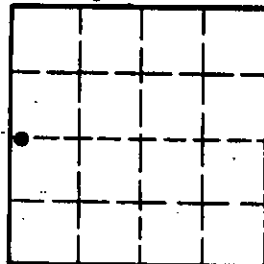
Employer: U.S.F.S.

Office of Clerk and Recorder, County of Lincoln. This "corner record" was filed for record on the July 12th day of 1983 was noted on the cross-index plat and is assigned page No. 2276, in book No. _____

James BF Siegel by Betty L. Conner
County Official deputy

Cross Index No. _____ T. 35 R. 26 P.M.M.

Sec. 6



• - corner this sheet

