

## INSTRUCTIONS

1. Original and/or sufficient record used to evaluate the corner position.
2. Description of evidence found, note discrepancies in the record, state method of establishing lost or obliterated corners.
3. Description of monument and accessories set to perpetuate the corner position.
4. Sketch or corner, show all pertinent data which can best be shown in a sketch example, corner marking, topography ties, position of accessories, etc.
5. Certification must be signed and sealed by Registered Land Surveyor in State of Montana.
6. Fill in Cross Index & Section Diagram at bottom of sheet.

## CERTIFIED CORNER RECORDATION

Corner 1/4 corner between Sec. 13 & 14 T. 35N R. 26W P.M.M. Lincoln County

Record: Set a post 3' long x 3" sq. 24" in the ground from which

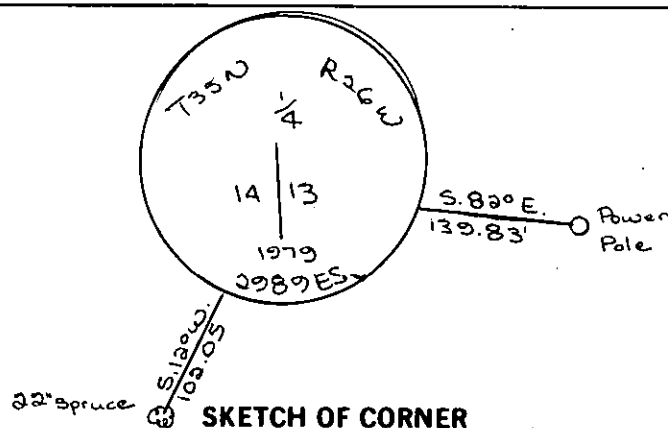
a poplar 12" diam. bears S. 76° 15' E. 383 lks.

a poplar 6" diam. bears S. 61° 30' W. 225 lks.

No evidence found.

Set aluminum cap by single proportion.

See C. of S. No 800 for adjacent corners.



SKETCH OF CORNER

### CERTIFICATION

I, \_\_\_\_\_  
certify the information shown herein is true and correct.

Signature Ground Party Chief

I, D. K. Macquardt  
certify that this Corner Record correctly represents work performed  
by me or under my direction in compliance with the "Corner  
Recordation Act" (70-22-101, et seq., M.D.A.)

Signature of Surveyor & Seal

Date: 7-8-81 Reg. No. 2280ES

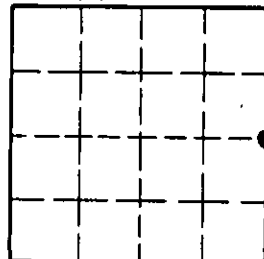
Employer: \_\_\_\_\_

Office of Clerk and Recorder, County of Lincoln. This "corner  
record" was filed for record on the 12<sup>th</sup> August day of 1981,  
was noted on the cross-index plat and is assigned page No. 1207, in  
book No. 1

Eleazer L. Daugherty, Jr.  
County Official

Cross Index No. L-21 T. 35N R. 26W PMM

Sec. 14



• - corner this sheet

