

CERTIFIED CORNER RECORDATION

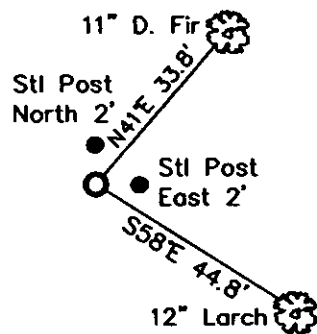
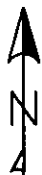
Corner SW 1/16 Sec 13 T. 35N R. 26W P.M.M. Lincoln County

Found:
Nothing.

Established:
A 3 1/4 ins. Aluminum cap on 5/8 inch rebar, 0.4 ft. above ground, stamped as shown.
A D Fir, 11 ins. in diam. bears N41°E, 33.8 ft. dist., scribed SW 1/16 S 13 BT.
A Larch, 12 ins. in diam. bears S58°E, 44.8 ft. dist., scribed SW 1/16 S 13 BT.
A Steel post with LSM decal, bears North 2 ft. and East 2 ft.



MAGNETIC DECLINATION - 15°4' EAST



SKETCH OF CORNER

CERTIFICATION

I, Erich Shrack
certify the information above is true and correct.

LAWRENCE A. GLAHE
certify that this Corner Recordation represents work performed by me or under my direction in compliance with the "Corner Recordation Act" (MCA 92-2-101, et seq.)

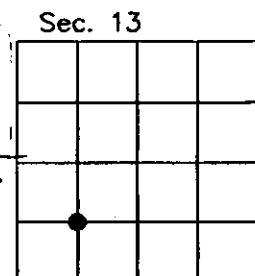
Date: 12/01/2010 LS 9748 LS
Employer: GLAHE & ASSOC., INC.

Office of Clerk and Recorder, County of Lincoln. This "corner

record" was filed for record 230128 BOOK: CCR CCR'S PAGE: 11726 Pages: 1
STATE OF MONTANA LINCOLN COUNTY
was noted on the cross-index RECORDED: 12/09/2010 12:49 KOI: CCR'S
book No. TAMMY D. LAUER CLERK AND RECORDER
FEE: \$0.00 BY: Glahe & Assoc. Inc.

TO: GLAHE & ASSOC., INC. P.O. BOX 1863, SANDPOINT, ID. 83860
Cross Index No. M-22 T. 35N R. 26W PMM

Adopted July 1, 1981, Montana Board of Professional Engineers & Land Surveyors



● corner this sheet

