

CERTIFIED CORNER RECORDATION

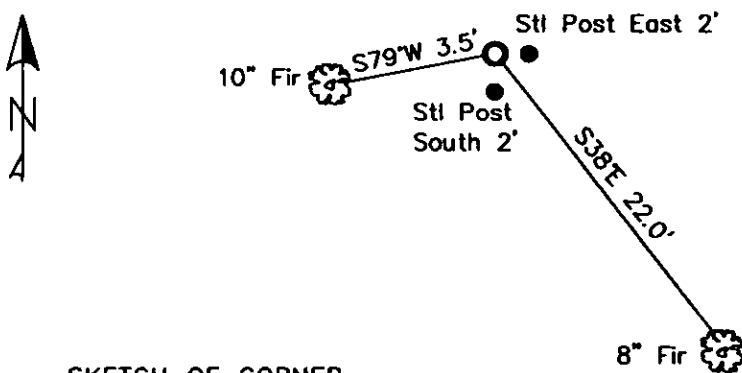
Corner NW 1/16 Sec 13 T. 35N R. 26W P.M.M. Lincoln County

Found:
Nothing.

Established:
A 3 1/4 ins. Aluminum cap on 5/8 inch rebar, 0.4 ft. above ground, stamped as shown.
A D Fir, 8 ins. in diam. bears S38°E, 22.0 ft. dist., scribed NW 1/16 S 13 BT.
A D Fir, 10 ins. in diam. bears S79°W, 3.5 ft. dist., scribed NW 1/16 S 13 BT.
A Steel post with LSM decal, bears East 2 ft. and South 2 ft.



MAGNETIC DECLINATION - 15°4' EAST



SKETCH OF CORNER

CERTIFICATION

I, Erich Shrack
certify the information shown herein is true and correct.

LAWRENCE A. GLAHE
certify that this corner was established in accordance with the "Corner Recordation Act" (MCA, et seq.)

Date: 12/10/2010 9748 LS

Employer: GLAHE & ASSOC., INC.

Office of Clerk and Recorder, County of Lincoln. This "corner

record" was filed for rec 230126 BOOK: CCR CC&R'S PAGE: 11724 Pages: 1

was noted on the cross: STATE OF MONTANA LINCOLN COUNTY RECORDED: 12/09/2010 12:47 KOI: CC&R'S

book No. TAMMY D. LAUER CLERK AND RECORDER

FEE: \$0.00

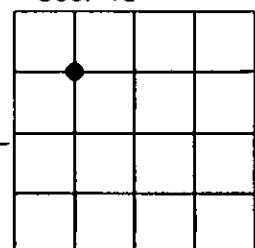
BY: Lawrence A. Glahé

TO: GLAHE & ASSOC., INC. P.O. BOX 1863, SANDPOINT, ID. 83860

Cross Index No. K-22 T. 35N R. 26W PMM

Adopted July 1, 1981, Montana Board of Professional Engineers & Land Surveyors

Sec. 13



● corner this sheet

1. 1000