

Corner NE 1/16 Sec 13 T. 35N R. 26W P.M.M. Lincoln County

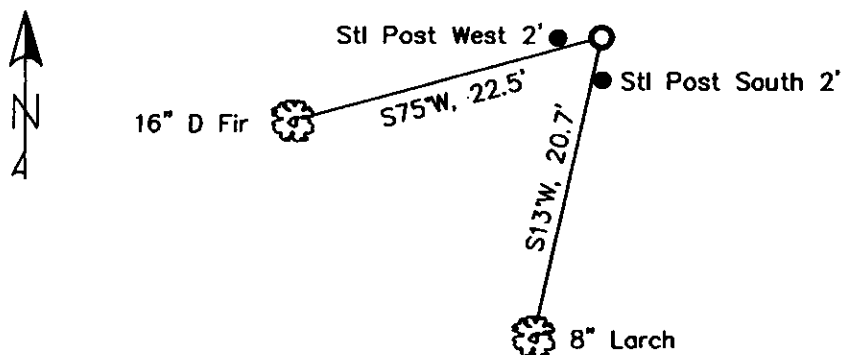
- This corner was never set.

2. Found:
None.

- Set a 3 1/4 inch Aluminum cap on 5/8 inch rebar 0.4 ft. above ground stamped as shown.
A Larch, 8 ins. in diam. bears S13°W, 20.7 ft. dist., scribed NE 1/16 S 13 BT.
A D Fir, 16 ins. in diam. bears S75°W, 22.5 ft. dist., scribed NE 1/16 S13 BT.
A Steel post with LSM decal, bears South 2 ft. and West 2 ft.



MAGNETIC DECLINATION - 15°4' EAST



SKETCH OF CORNER

CERTIFICATION

I, Erich Shrack
certify the information shown hereon to be true and correct.

LAWRENCE A. GLAHE
I, _____
certify that the Corner and Boundary Measurements were performed by me or under my direction in compliance with the "Corner Registration Act" (P.L. 82-401, et seq. (R.C.A.))

9748 LS

REGISTERED
LAND SURVEYOR

Date: 12-2-70 9748 LS

Employer: GLAHE & ASSOCIATES, INC.

Office of Clerk and Recorder, County of Lincoln. This "corner

record" was filed for reco

230125 BOOK: CCR CCR'S PAGE: 11723 Pages: 1

Sec. 13

STATE OF MONTANA LINCOLN COUNTY

was noted on the cross-

RECORDED: 12/09/2010 12:46 KOI: CC&R'S

book No.

TAMMY D. LAUER CLERK AND RECORDER

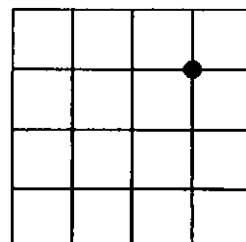
FEE: \$0.00

BY:

TO: GLANE & ASSOC., INC. P.O. BOX 1863, SANDPOINT, ID. 83866

Cross Index No. K-24 T. 35N R. 26W PMM

Adopted July 1, 1981, Montana Board of Professional Engineers & Land Surveyors



● corner this sheet

