

CERTIFIED CORNER RECORDATION

Corner W 1/4 Sec 13 T. 35N R. 26W P.M.M. Lincoln County

1. 1894 G.L.O. Original Record by A.L. Jaqueth et al:

Set:

A post 3 ft. long, 3 ins. square, 24 ins. in the ground, for 1-4 Sec Cor., marked 1-4 S. on W face; from which;

A Poplar, 12 ins. diam. bears S76°15'E, 383 lks. dist. marked 1-4 S. B.T.

A Poplar, 6 ins. diam. bears S61°30'W, 295 lks. dist. marked 1-4 S. B.T.

1981 Certified Corner Recordation by D.K. Marquardt

No evidence found;

Set:

An Aluminum cap by single proportion. See C. of S. No. 800 for adjacent corners.

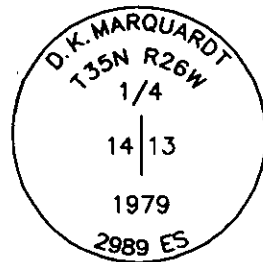
2. Found:

3 1/4 ins. Aluminum monument 0.8 ft. above ground and leaning ± 0.3 SE, stamped as shown. Power pole bears S82°E, 139.8 ft.

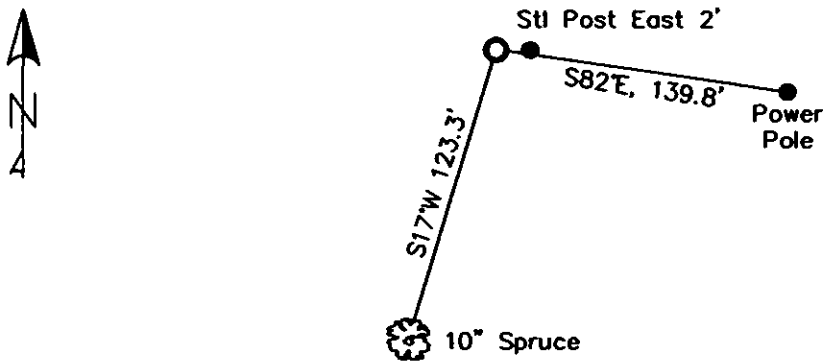
3. Established:

A Spruce, 10 ins. in diam. bears S17°W, 123.3 ft. dist., scribed 1/4 S 14 BT.

A Steel post with LSM decal, bears East 2 ft.



MAGNETIC DECLINATION - 15°4' EAST



SKETCH OF CORNER

CERTIFICATION

I, Erich Shrack
certify the information shown herein to be true and correct.

I, LAWRENCE A. GLAHE
certify that this Corner Recordation was performed by me or under my direct supervision in compliance with the "Corner Recordation Act" (MCA 19-2-401, et seq.)

Date: 12/6/10 9748 LS

Employer: GLAHE & ASSOC., INC.

Office of Clerk and Recorder, County of Lincoln This "corner
record" was filed for record 230124 BOOK: CCR CCR'S PAGE: 11722 Pages: 1
was noted on the cross-index STATE OF MONTANA LINCOLN COUNTY
book No. RECORDED: 12/09/2010 12:45 KOI: CCR'S
TAMMY D. LAUER CLERK AND RECORDER
FEE: \$0.00 BY:
TO: GLAHE & ASSOC., INC. P.O. BOX 1863, SANDPOINT, ID. 83860

Cross Index No. L-21 T. 35N R. 26W PMM

Adopted July 1, 1981, Montana Board of Professional Engineers & Land Surveyors

● corner this sheet

