

CERTIFIED CORNER RECORDATION

Corner SE 1/16 Sec 13 T. 35N R. 26W P.M.M. Lincoln County

1. Original GLO Notes:

This corner was never set.

2. Found:

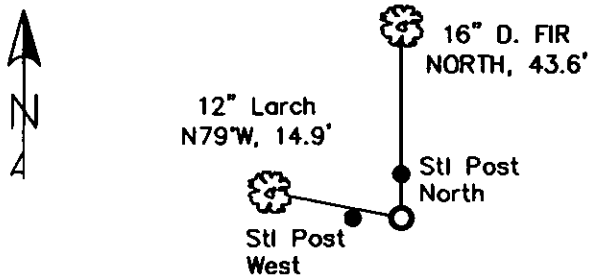
None.

3. Established:

Set a 3 1/4 inch Aluminum cap on 5/8 inch rebar 0.3 ft. above ground stamped as shown.
A D. Fir, 16 ins. in diam. bears NORTH, 43.6 ft. dist., scribed SE 1/16 S 13 BT.
A Larch, 12 ins. in diam. bears N79°W, 14.9 ft. dist., scribed SE 1/16 S13 BT.
A Steel post with LSM decal, bears North and West.



MAGNETIC DECLINATION - 15°4' EAST



CERTIFICATION

I, Erich Strack
certify the information shown herein to be true and correct.

LAWRENCE A. GLAHE
I, LAWRENCE A. GLAHE
certify that the Corner Location shown represents work performed by me or under my direct supervision in compliance with the "Corner Relocation Act" (PL 86-610, et seq. H.R.A.)

Date: 12/6/10 9748 LS
Employer: GLAHE & ASSOC., INC.

SKETCH OF CORNER

Office of Clerk and Recorder, County of Lincoln. This "corner

record" was filed for re

230122 BOOK: CCR CC&R'S PAGE: 11720 Pages: 1

was noted on the cross

STATE OF MONTANA LINCOLN COUNTY
RECORDED: 12/09/2010 12:44 KOI: CC&R'S

book No. _____

TAMMY D. LAUER CLERK AND RECORDER

FEE: \$0.00

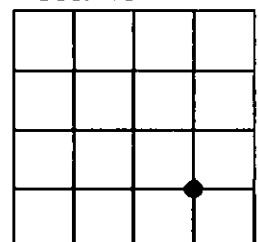
BY: Laurie Dean

TO: GLAHE & ASSOC., INC. P.O. BOX 1863, SANDPOINT, ID. 83860

Cross Index No. M-24 T. 35N R. 26W PMM

Adopted July 1, 1981, Montana Board of Professional Engineers & Land Surveyors

Sec. 13



● corner this sheet

1. The first part of the report is a general description of the project and its objectives. It includes a brief history of the project and a statement of the problem being addressed. The second part of the report is a detailed description of the methodology used in the study. This includes a description of the data sources, the sampling method, and the statistical methods used to analyze the data. The third part of the report is a discussion of the results of the study. This includes a description of the findings and a comparison of the results with previous research. The fourth part of the report is a conclusion and a list of references.

2. The first part of the report is a general description of the project and its objectives. It includes a brief history of the project and a statement of the problem being addressed. The second part of the report is a detailed description of the methodology used in the study. This includes a description of the data sources, the sampling method, and the statistical methods used to analyze the data. The third part of the report is a discussion of the results of the study. This includes a description of the findings and a comparison of the results with previous research. The fourth part of the report is a conclusion and a list of references.

3. The first part of the report is a general description of the project and its objectives. It includes a brief history of the project and a statement of the problem being addressed. The second part of the report is a detailed description of the methodology used in the study. This includes a description of the data sources, the sampling method, and the statistical methods used to analyze the data. The third part of the report is a discussion of the results of the study. This includes a description of the findings and a comparison of the results with previous research. The fourth part of the report is a conclusion and a list of references.

4. The first part of the report is a general description of the project and its objectives. It includes a brief history of the project and a statement of the problem being addressed. The second part of the report is a detailed description of the methodology used in the study. This includes a description of the data sources, the sampling method, and the statistical methods used to analyze the data. The third part of the report is a discussion of the results of the study. This includes a description of the findings and a comparison of the results with previous research. The fourth part of the report is a conclusion and a list of references.