

CERTIFIED CORNER RECORDATION

Corner CN 1/16 Sec 13 T. 35N R. 26W P.M.M. Lincoln County

1. Original GLO Notes:

This corner was never set.

2. Found:

None.

3. Established:

A 3 1/4 ins. Aluminum cap on 5/8 inch rebar, 0.4 ft. above ground, stamped as shown.

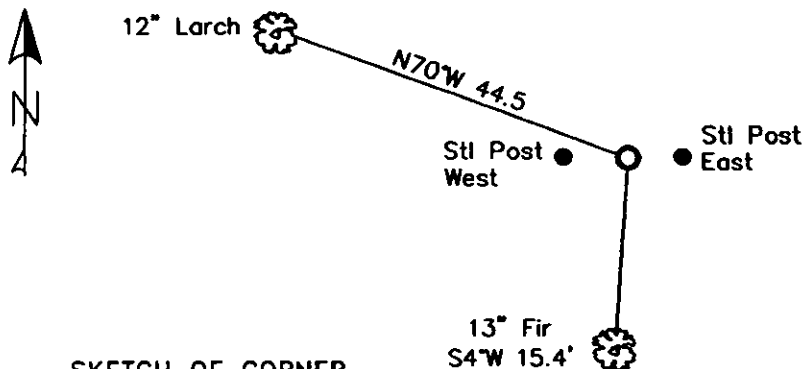
A Fir, 13 ins. in diam. bears S4°W, 15.4 ft. dist., scribed CN 1/16 S 13 BT.

A Larch, 12 ins. in diam. bears N70°W, 44.5 ft. dist., scribed CN 1/16 S 13 BT.

A Steel post with LSM decal, bears East and West.



MAGNETIC DECLINATION - 15'4" EAST



SKETCH OF CORNER

CERTIFICATION

I, Erich Shrock
certify that the information shown herein is true and correct.

LAWRENCE A. GLAHE
certify that this Corner Recordation represents work performed by me or under my supervision in compliance with the "Corner Recordation Act" (MCA 2-22-101, et seq. M.C.A.)

Date: 12-6-10 9748 LS
Employer: GLAHE & ASSOC., INC.

Office of Clerk and Recorder, County of Lincoln. This "corner
record" was filed for record 230120 BOOK: CCR CC&R'S PAGE: 11718 Pages: 1
was noted on the cross-ind STATE OF MONTANA LINCOLN COUNTY
book No. RECORDED: 12/09/2010 12:42 KOI: CC&R'S
TAMMY D. LAUER CLERK AND RECORDER
FEE: \$0.00 BY:
TO: GLAHE & ASSOC., INC. P.O. BOX 1863, SANDPOINT, ID. 83860,
Cross Index No. K-23 T. 35N R. 26W PMM

Adopted July 1, 1981, Montana Board of Professional Engineers & Land Surveyors

Sec. 13

● corner this sheet

