

CERTIFIED CORNER RECORDATION

Corner SE Cor Sec 13 T. 35N R. 26W P.M.M. Lincoln County

1. 1894 G.L.O. Original Record by A.L. Jaqueth et al:

Set:

A Limestone, 12x8x7 ins., 8 ins. in the ground for Cor to Secs. 13, 18, 19, & 24, mkd. with 3 notches on South edges,

From which:

- A Tamarack, 18 ins. in diam., bears N45°E, 96 lks. dist., mkd. T35N R25W S18 BT;
- A Tamarack, 24 ins. in diam., bears S13°E, 72 lks. dist., mkd. T35N R25W S19 BT;
- A Tamarack, 20 ins. in diam., bears S28°W, 33 lks. dist., mkd. T35N R26W S24 BT;
- A Tamarack, 24 ins. in diam., bears N33°W, 9 lks. dist., mkd. T35N R26W S13 BT;

1960 BLM Remonumentation by Cunningham:

Found:

A Limestone, 12x8x7 ins., set and mkd. as described in the official record;

From which:

- A Lorch stump, 20 ins. in diam., bears N45°E, 95 lks. dist., markings illegible;
- A Larch, 24 ins. in diam., bears S13°E, 72 lks. dist., markings overgrown;
- A Stump hole, bears S28°W, 33 lks. dist., with fallen log having old blaze.

Set:

- A Iron Post, 30 ins. long, 2 1/2 ins. in diam., 28 ins. in the ground, in concrete with A Brass Cap, mkd. as shown;

Established:

- A Larch, 8 ins. in diam., bears N65°E, 30 lks. dist., mkd. T35N R25W S18 BT;
- A Larch, 8 ins. in diam., bears S38°E, 25 lks. dist., mkd. T35N R25W S19 BT;
- A Larch, 8 ins. in diam., bears S81°W, 36 lks. dist., mkd. T35N R26W S24 BT;
- A Larch, 8 ins. in diam., bears N63 3/4°W, 61 lks. dist., mkd. T35N R26W S13 BT;

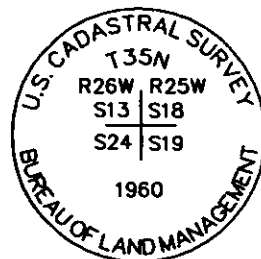
Bury the original stone alongside and raise a mound of stone, 3 ft. base, 2 ft. high, W of the iron post.

2. Found:

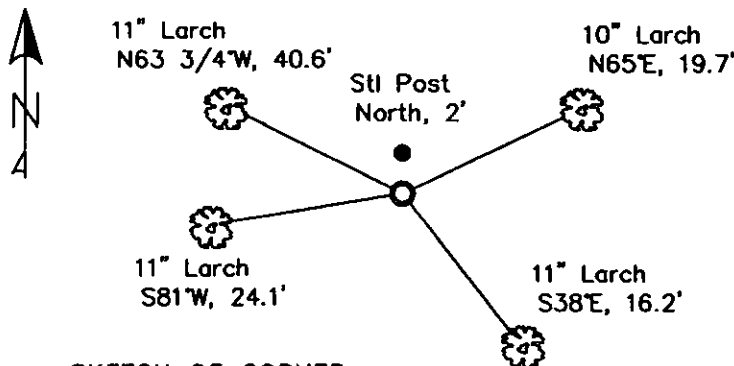
- A BLM Brass Cap, 3 1/4 ins. in diam., flush with ground, mkd. as shown;
- A Larch, 10 ins. in diam., bears N65°E, 19.7 ft. dist., healed blaze;
- A Larch, 11 ins. in diam., bears S38°E, 16.2 ft. dist., healed face;
- A Larch, 12 ins. in diam., bears S81°W, 24.1 ft. dist., healed face;
- A Larch, 11 ins. in diam., bears N63 3/4°W, 40.6 ft. dist.;
- A Larch with K tag, bears East, 15 ft. dist.

3. Established:

- A Steel post with LSM decal, bears North, 2 ft. dist.,
- Cleared brush and painted bands and blazes on all BTs.



MAGNETIC DECLINATION - 15°4' EAST



SKETCH OF CORNER

CERTIFICATION

I, Erich Shrack  
certify the information shown herein is true and correct.

LAWRENCE A. GLAHE  
certify that this Corner Monument represents that performed by me or under my supervision in compliance with the "Corner Monument Act" (P.L. 86-220, et seq. (U.S.A.))

Date: 12-6-10 9748 LS  
Employer: GLAHE & ASSOC., INC.

Office of Clerk and Recorder, County of Lincoln This "corner

record" was filed for record

was noted on the cross-ind

book No.

230119 BOOK: CCR CC&R'S PAGE: 11717 Pages: 1  
STATE OF MONTANA LINCOLN COUNTY  
RECORDED: 12/09/2010 12:41 KOI: CC&R'S  
TAMMY D. LAUER CLERK AND RECORDER  
FEE: \$0.00 BY: Lawrence Glahe  
TO: GLAHE & ASSOC., INC. P.O. BOX 1863, SANDPOINT, ID. 83860,  
Cross Index No. N-25 T. 35N R. 26W PMM

Sec. 13

