

CERTIFIED CORNER RECORDATION

Corner S¼ Cor Sec 13 T. 35N R. 26W P.M.M. Lincoln County

1. 1894 G.L.O. Original Record by A.L. Jaqueth et al:

Set:

A Post, 3 ft. long, 3 ins. square, 24 ins. in the ground, mkd. ¼S on N face;

From which:

A Fir, 14 ins. in diam., bears S67°30"E, 20 lks. dist., mkd. ¼ SBT;

A Tamarack, 36 ins. in diam., bears N42°15'E, 95 lks. dist., mkd. ¼SBT;

1960 BLM Remonumentation by Cunningham & Stephens:

Found:

A Rotted wooden post, 3 ins. square, set and mkd. as described;

From which:

A Stump hole, bears N42¼E, 95 lks. dist. with fallen log mkd. ¼ S BT;

A Fir Stump, 21 ins. in diam., bears S67½E, 20 lks. dist., no marks visible;

Set:

An Iron post, 30 ins. long, 2½ ins. diam., 26 ins. in the ground, with

A Brass Cap, mkd. as shown;

2. Found:

A BLM Brass Cap, 3¼ ins. in diam., flush with ground, mkd. as shown;

A BT Stump, bears S71°W, 28.8 ft. dist.;

A BT Stump, bears N23¼W, 14.3 ft. dist.;

A BT Stump, bears S67½E, 12.4 ft. dist.;

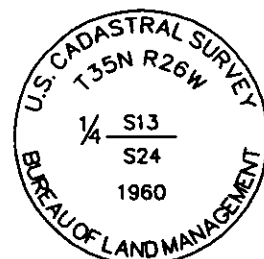
3. Established:

A Fir, 10 ins. in diam., bears S48°W, 14.2 ft. dist. scribed "¼ S24 BT";

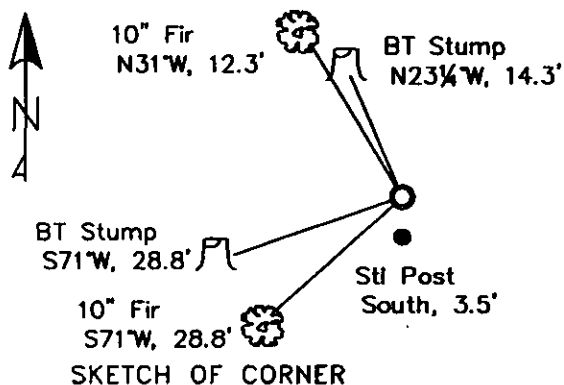
A Fir, 10 ins. in diam., bears N31°W, 12.7 ft. dist. scribed "¼ S13 BT";

A Steel post with LSM decal, bears South, 3.5 ft. dist..

Placed BT tags on stumps.



MAGNETIC DECLINATION - 15°4' EAST



CERTIFICATION

I, Erich Shrack
certify the information given herein is true and correct.

LAWRENCE A. GLAHE
certify that the Corner Recordation was performed by me or under my supervision in compliance with the "Corner Recordation Act" (MCA, et al.)

Date: 12-6-10 9748 LS
Employer: GLAHE & ASSOC., INC.

Office of Clerk and Recorder, County of Lincoln This "corner

record" was filed for record (

230118 BOOK: CCR CC&R'S PAGE: 11716 Pages: 1

Sec. 13

was noted on the cross-index

STATE OF MONTANA LINCOLN COUNTY

book No. _____

RECORDED: 12/09/2010 12:40 KOI: CC&R'S

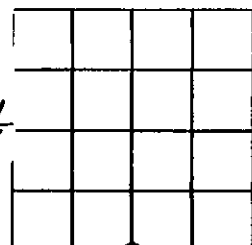
TAMMY D. LAUER CLERK AND RECORDER

FEE: \$0.00

TO: GLAHE & ASSOC., INC. P.O. BOX 1863, SANDPOINT, ID. 83860.

Cross Index No. N-23 T. 35N R. 26W PMM

Adopted July 1, 1981, Montana Board of Professional Engineers & Land Surveyors



• corner this sheet

