

CERTIFIED CORNER RECORDATION

Corner NW Cor Sec 13 T. 35N R. 26W P.M.M. Lincoln County

1. 1894 G.L.O. Original Record by A.L. Jaqueth et al:

Set:

A post 4 ft. long 4 ins. square with marked stone 12 ins. in the ground for cor. to secs 11, 12, 13 & 14 marked T35N S12 on NE, R26W S13 on SE, S14 on SW and S11 on NW faces with 4 notches on S and 1 notch on E edges; dug pits 18x18x12 ins. in each sec; 3½ ft. dist. and raised a mound of earth 2 ft. high 4½ ft. base around post. No bearing trees large enough to mark within limits.

1979 C.C.R. by D.K. Marquardt:

Found:

No Original Evidence Found.

Set:

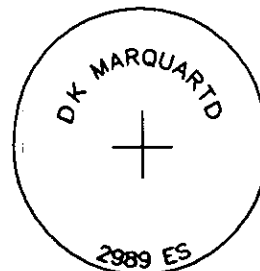
An Aluminum Cap at interstion of E-W Fenceline with N-S, CL of Graves Creek Road
See C of S No. 800 for adjacent corners.

2. Found:

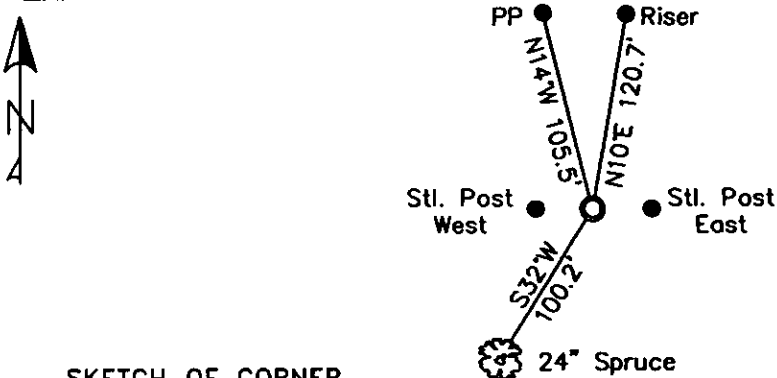
A BLM Brass Cap, 3¼ ins. in diam., 4 ins. below asphalt, surface of Grave Creek Road, mkd. as shown;
A Wood Post with K Tag, bears West, 20.8 ft. dist.

3. Dug Asphalt to expose Brass Cap, refilled hole and set PK Nail in surface of Grave Creek Road.

Wood Phone Co. Riser Pole, bears N10°E, 120.7 ft. dist. marked GCC 14;
A Spruce, 24 ins. in diam., bears S32°W, 100.2 ft. dist., scribed "T35N R26W S14 BT";
A Wood power pole with transformer mkd. "J116 R6, bears N14°W, 105.5 ft. dist.;
A Steel post with LSM decal, bears East, 19.8 ft. dist;
A Steel post with LSM decal bears West, 20.1 ft. dist.;
Both steel posts are in north-south fence lines.



MAGNETIC DECLINATION - 15'4" EAST



SKETCH OF CORNER

CERTIFICATION	
I, <u>Erich Shrock</u>	certify the information shown herein is true and correct.
I, <u>LAWRENCE A. GLAHE</u>	
certify that the Corner Recordation was performed by me or under my supervision in compliance with the "Corner Recordation" Act, MCA, 19-1-101, et seq. (M.C.A.)	
Date: <u>12/6/10</u>	9748 LS
EMPLOYER: <u>GLAHE & ASSOC., INC.</u>	

Office of Clerk and Recorder, County of Lincoln. This "corner

record" was filed for rec: 230114 BOOK: CCR CC&R'S PAGE: 11712 Pages: 1

was noted on the cross- STATE OF MONTANA LINCOLN COUNTY

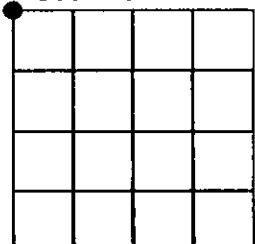
book No. TAMMY D. LAUER CLERK AND RECORDER

FEE: \$0.00 BY: Lawrence Glahe
TO: GLAHE & ASSOC., INC. P.O. BOX 1863, SANDPOINT, ID. 83860,

Cross Index No. J-21 T. 35N R. 26W PMM

Adopted July 1, 1981, Montana Board of Professional Engineers & Land Surveyors

Sec. 13



• corner this sheet

1. The first step in the process is to identify the problem or issue that needs to be addressed. This involves gathering information and understanding the context of the problem.