

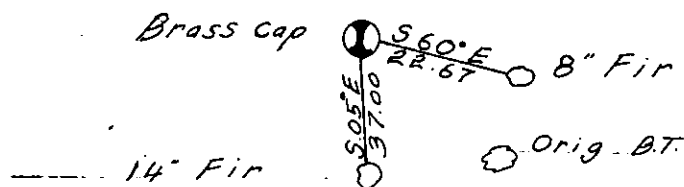
# CERTIFIED LAND CORNER RECORDATION

## DESCRIPTION OF CORNER EVIDENCE FOUND, AND ORIGINAL RECORD (IF KNOWN)

Corner was set by the B.L.M. accepted as the corner.

## DESCRIPTION OF MONUMENT AND ACCESSORIES ESTABLISHED TO PERPETUATE THE ORIGINAL LOCATION OF THIS CORNER:

Date of work: 7 - 73



## SKETCH, WITH COURSE AND DISTANCE TO ADJACENT CORNERS IF DETERMINED IN THIS SURVEY. (MAY SKETCH OR PASTE REPRODUCTION ON REVERSE SIDE.)

Surveyor's Seal

I, Sherman D. Marquardt

certify that the information shown herein is true and correct.

Sherman D. Marquardt  
Signature of Ground Party Chief

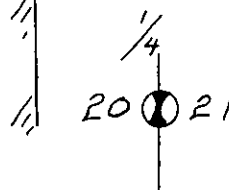
I, Dean K. Marquardt

certify that I have carefully performed or reviewed the work done on the diagrammed corner as reported on this recordation form and approve the same.

Dean K. Marquardt  
Signature of Surveyor

## DIAGRAM OF CORNER:

N. T35NR26W



① = Corner recorded on the sheet

ES2989  
Registration Number

Office of Clerk and Recorder, County of Lincoln

This "corner record" was filed for record on the 17th day of July, 1981, was noted on the cross-index plat and is assigned page No. 1141, in book No. 1

Thomas L. Vaughan, Jr.  
County Official

