

CERTIFIED CORNER RECORDATIONCorner W1/16 S36,T35N,R26W & S1,T34N,R26W T. 35N R. 26W P.M.M. LINCOLN CountyG.L.O. Record:

This interior section subdivisional corner was never set by G.L.O. or other original government survey, but its position can be calculated by dimensions shown on the official government plat for this township.

Subsequent Record:

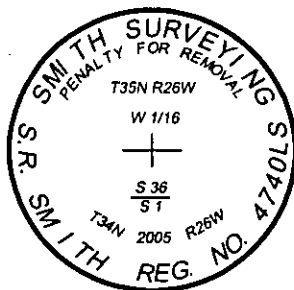
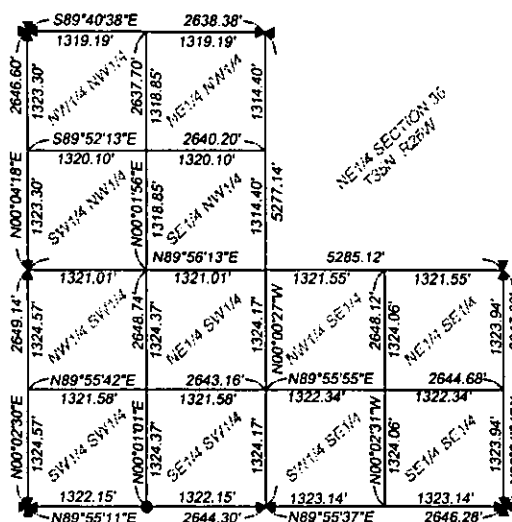
No subsequent record.

New Monumentation Established:

At the calculated position for the corner, as established by proportionate measure and as shown on the attached section subdivisional diagram, I set a Berntsen flared base monument (model #A1NBF30), which consists of a 2-3/8" diameter by 30" long flared aluminum pipe with a magnet and 3-1/4" diameter aluminum cap attached to the top, stamped as shown in detail below. Placed small collar of rock around cap, which is flush with ground.

Section Subdivision

Section 36, Township 35 North, Range 26 West

**SKETCH OF CORNER****CERTIFICATION**1. Michael R. Rice

certify the information shown herein is true and correct.

Michael R. Rice
Signature Ground Party Chief

1. S. R. Smith

certify that this Corner Record correctly represents work performed by me or under my direction in compliance with the "Corner Recordation Act" (70-22-101, et seq., M.C.A.)

S. R. Smith
Signature of Surveyor & Seal

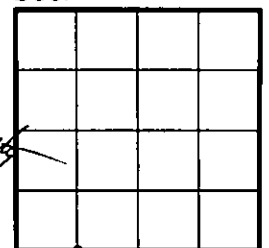
Date: 9/26/05Reg. No. 4740LSEmployer: Smith Surveying & Consulting

Office of Clerk and Recorder, Lincoln, This "corner
190091 BOOK: CCR CC&R'S PAGE: 10892 Pages: 1
record" was filed for record
STATE OF MONTANA LINCOLN COUNTY
RECORDED: 12/05/2005 2:20 KOI: CC&R'S
was noted on the cross-
CORAL M. CUMMINGS CLERK AND RECORDER
book No. FEE: \$0.00 BY: *Jeannette Lenoir*
TO: SMITH SURVEYING 1131 SOUTH MAIN, P.O. BOX 7323, KALISPELL, MT

Cross Index No. Z-22 T. 35N R. 26W P.M.M.

Adopted July 1, 1981, Montana Board of Professional Engineers & Land Surveyors

Sec. 36



●=corner this sheet

